



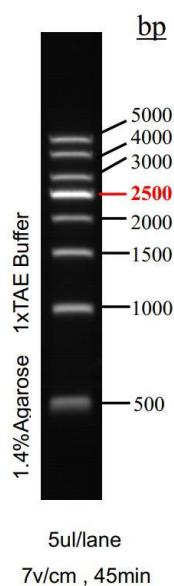
**ELK Biotechnology**  
For research use only.

## 500bp DNA Ladder

Catalog No.	Specification	Storage/Shelflife
EDL107-01	250μl	-20C°/2 years
EDL107-02	500μl	-20C°/2 years

### Introduction

500 bp Ladder DNA Marker is composed of 8 DNA fragments with a length of 500 bp to 5,000 bp. dissolved in 1×Loading Buffer, and can be used for direct electrophoresis of 5-10 μl during used, which is very convenient to use. The indicator band is 2,500 bp and the concentration is 100 ng/5μL, and the other bands were 40 ng/5 μL.



### Note

1. When the width of the sample well during electrophoresis is less than 5 mm, a clear band can be obtained by taking 5 μl Marker electrophoresis each time. If the sample hole is widened, the sampler volume of Marker must be increased appropriately.
2. For DNA electrophoresis, the purity of Agarose greatly affects the clarity of DNA bands. Therefore, the best quality Agarose should be used for electrophoresis. The recommended gel concentration is 1% to 2%.
3. When performing Agarose electrophoresis, the concentration of Agarose is closely related to the separation performance of DNA fragments. The greater the concentration of Agarose, the better the separation performance of short DNA; conversely, the smaller the concentration of Agarose, the more favorable for the separation of long DNA.

