



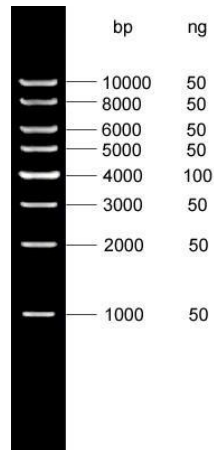
ELK Biotechnology
For research use only.

1 kb DNA Ladder

Catalog No.	Specification	Storage/Shelflife
EDL105-01	250 μ l	-20C°/2 years
EDL105-02	500 μ l	-20C°/2 years

Introduction

1kb Ladder DNA Marker is composed of 8 kinds of DNA fragments with a length of 100bp to 10000bp, dissolved in 1 \times Loading Buffer, and can be used for direct electrophoresis of 5-10 μ l during use, which is very convenient to use.



Note

1. When the width of the sample well during electrophoresis is less than 5 mm, a clear band can be obtained by taking 5 μ l Marker electrophoresis each time. If the sample hole is widened, the sampler volume of Marker must be increased appropriately.
2. For DNA electrophoresis, the purity of Agarose greatly affects the clarity of DNA bands. Therefore, the best quality Agarose should be used for electrophoresis, and the recommended gel concentration is 1% to 2%%.
3. When performing Agarose electrophoresis, the concentration of Agarose is closely related to the separation performance of DNA fragments. The greater the concentration of Agarose, the better the separation performance of short DNA; conversely, the smaller the concentration of Agarose, the more favorable for the separation of long DNA.