



# LYPA2 rabbit pAb

Cat No.:ES9350

For research use only

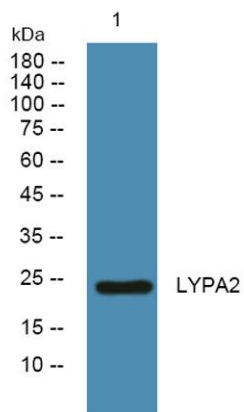
## Overview

<b>Product Name</b>	LYPA2 rabbit pAb
<b>Host species</b>	Rabbit
<b>Applications</b>	WB;ELISA
<b>Species Cross-Reactivity</b>	Human;Mouse;Rat
<b>Recommended dilutions</b>	WB 1:500-2000 ELISA 1:5000-20000
<b>Immunogen</b>	Synthesized peptide derived from human protein . at AA range: 30-110
<b>Specificity</b>	LYPA2 Polyclonal Antibody detects endogenous levels of protein.
<b>Formulation</b>	Liquid in PBS containing 50% glycerol, 0.5% BSA and 0.02% sodium azide.
<b>Storage</b>	Store at -20°C. Avoid repeated freeze-thaw cycles.
<b>Protein Name</b>	Acyl-protein thioesterase 2 (APT-2) (EC 3.1.2.-) (Lysophospholipase II) (LPL-II) (LysoPLA II)
<b>Gene Name</b>	LYPLA2 APT2
<b>Cellular localization</b>	Cytoplasm .
<b>Purification</b>	The antibody was affinity-purified from rabbit antiserum by affinity-chromatography using epitope-specific immunogen.
<b>Clonality</b>	Polyclonal
<b>Concentration</b>	1 mg/ml
<b>Observed band</b>	25kD
<b>Human Gene ID</b>	11313
<b>Human Swiss-Prot Number</b>	O95372
<b>Alternative Names</b>	
<b>Background</b>	Lysophospholipases are enzymes that act on biological membranes to regulate the multifunctional lysophospholipids. There are alternatively spliced transcript variants described for this gene but the full length nature is not known yet. [provided by RefSeq, Jul 2008],





**ELK Biotechnology**



Western blot analysis of lysates from PC12 cells, primary antibody was diluted at 1:1000, 4° over night



+86-27-59760950

[ELKbio@ELKbiotech.com](mailto:ELKbio@ELKbiotech.com)

[www.elkbiotech.com](http://www.elkbiotech.com)

23-2, No.388 Gaoxin 2nd Road, Wuhan East Lake Hi-tech Development Zone, Hubei, P.R.C