



KCTD7 rabbit pAb

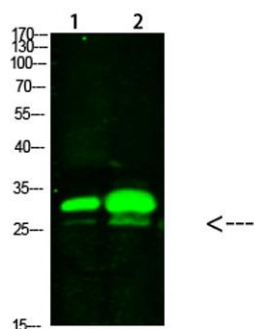
Cat No.:ES8838

For research use only

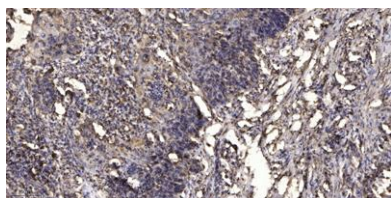
Overview

Product Name	KCTD7 rabbit pAb
Host species	Rabbit
Applications	WB;ELISA;IHC
Species Cross-Reactivity	Human;Mouse;Rat
Recommended dilutions	WB 1:500-2000;IHC-p 1:50-300; ELISA 2000-20000
Immunogen	Synthesized peptide derived from human KCTD7. at AA range: 181-230
Specificity	This antibody detects endogenous levels of KCTD7
Formulation	Liquid in PBS containing 50% glycerol, 0.5% BSA and 0.02% sodium azide.
Storage	Store at -20°C. Avoid repeated freeze-thaw cycles.
Protein Name	KCTD7
Gene Name	KCTD7
Cellular localization	Cell membrane. Cytoplasm, cytosol.
Purification	The antibody was affinity-purified from rabbit antiserum by affinity-chromatography using epitope-specific immunogen.
Clonality	Polyclonal
Concentration	1 mg/ml
Observed band	33kD
Human Gene ID	154881
Human Swiss-Prot Number	Q96MP8
Alternative Names	BTB/POZ domain-containing protein KCTD7
Background	This gene encodes a member of the potassium channel tetramerization domain-containing protein family. Family members are identified on a structural basis and contain an amino-terminal domain similar to the T1 domain present in the voltage-gated potassium channel. Mutations in this gene have been associated with progressive myoclonic epilepsy-3. Alternative splicing results in multiple transcript variants.[provided by RefSeq, Jan 2011],





Western Blot analysis of 1,mouse-brain 2,mouse-spleen cells using primary antibody diluted at 1:1000(4°C overnight). Secondary antibody:Goat Anti-rabbit IgG IRDye 800(diluted at 1:5000, 25°C, 1 hour)



Immunohistochemical analysis of paraffin-embedded human Squamous cell carcinoma of lung. 1, Antibody was diluted at 1:200(4° overnight). 2, Tris-EDTA,pH9.0 was used for antigen retrieval. 3,Secondary antibody was diluted at 1:200(room temperature, 45min).

