



# IL-12B p40 rabbit pAb

Cat No.:ES8734

For research use only

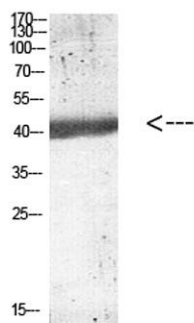
## Overview

<b>Product Name</b>	IL-12B p40 rabbit pAb
<b>Host species</b>	Rabbit
<b>Applications</b>	WB;IHC;IF;ELISA
<b>Species Cross-Reactivity</b>	Human;Rat;Mouse;
<b>Recommended dilutions</b>	WB 1:500-2000,IHC-p 1:500-200, ELISA 1:10000-20000
<b>Immunogen</b>	Synthetic peptide from human protein at AA range: 241-290
<b>Specificity</b>	The antibody detects endogenous IL-12B p40
<b>Formulation</b>	Liquid in PBS containing 50% glycerol, 0.5% BSA and 0.02% sodium azide.
<b>Storage</b>	Store at -20°C. Avoid repeated freeze-thaw cycles.
<b>Protein Name</b>	Interleukin-12 subunit beta (IL-12B) (Cytotoxic lymphocyte maturation factor 40 kDa subunit) (CLMF p40) (IL-12 subunit p40) (NK cell stimulatory factor chain 2) (NKSF2)
<b>Gene Name</b>	IL12B NKSF2
<b>Cellular localization</b>	Secreted.
<b>Purification</b>	The antibody was affinity-purified from rabbit antiserum by affinity-chromatography using epitope-specific immunogen.
<b>Clonality</b>	Polyclonal
<b>Concentration</b>	1 mg/ml
<b>Observed band</b>	40kD
<b>Human Gene ID</b>	3593
<b>Human Swiss-Prot Number</b>	P29460
<b>Alternative Names</b>	Interleukin-12 subunit beta (IL-12B;Cytotoxic lymphocyte maturation factor 40 kDa subunit;CLMF p40;IL-12 subunit p40;NK cell stimulatory factor chain 2;NKSF2)
<b>Background</b>	This gene encodes a subunit of interleukin 12, a cytokine that acts on T and natural killer cells, and has a broad array of biological activities. Interleukin



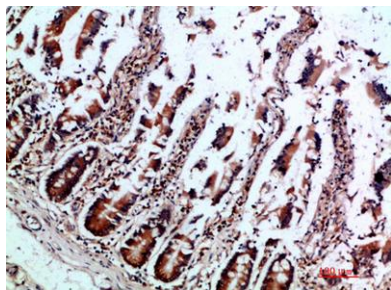


IL12 is a disulfide-linked heterodimer composed of the 40 kD cytokine receptor like subunit encoded by this gene, and a 35 kD subunit encoded by IL12A. This cytokine is expressed by activated macrophages that serve as an essential inducer of Th1 cells development. This cytokine has been found to be important for sustaining a sufficient number of memory/effector Th1 cells to mediate long-term protection to an intracellular pathogen. Overexpression of this gene was observed in the central nervous system of patients with multiple sclerosis (MS), suggesting a role of this cytokine in the pathogenesis of the disease. The promoter polymorphism of this gene has been reported to be associated with the severity of atopic and non-atopic asthma in children. [provi



Western blot analysis of mouse-kidney lysate, antibody was diluted at 1000. Secondary antibody(catalog#:RS0002) was diluted at 1:20000

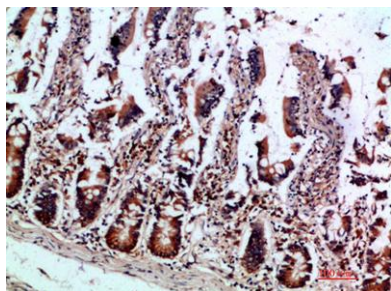
Immunohistochemical analysis of paraffin-embedded human-colon, antibody was diluted at 1:200





**ELK Biotechnology**

Immunohistochemical analysis of paraffin-embedded human-colon, antibody was diluted at 1:200



+86-27-59760950

[ELKbio@ELKbiotech.com](mailto:ELKbio@ELKbiotech.com)

[www.elkbiotech.com](http://www.elkbiotech.com)

23-2, No.388 Gaoxin 2nd Road,Wuhan East Lake Hi-tech Development Zone, Hubei , P.R.C