



CD236 rabbit pAb

Cat No.:ES8704

For research use only

Overview

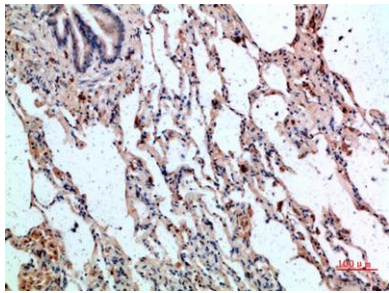
Product Name	CD236 rabbit pAb
Host species	Rabbit
Applications	IHC;IF;ELISA
Species Cross-Reactivity	Human;Rat;Mouse;
Recommended dilutions	IHC-p 1:50-200, ELISA 1:10000-20000
Immunogen	Synthetic peptide from human protein at AA range: 11-60
Specificity	The antibody detects endogenous CD236
Formulation	Liquid in PBS containing 50% glycerol, 0.5% BSA and 0.02% sodium azide.
Storage	Store at -20°C. Avoid repeated freeze-thaw cycles.
Protein Name	Glycophorin-C (Glycoconnectin) (Glycophorin-D) (GPD) (Glycoprotein beta) (PAS-2') (Sialoglycoprotein D) (CD antigen CD236)
Gene Name	GYPC GLPC GPC
Cellular localization	Cell membrane; Single-pass type III membrane protein. Linked to the membrane via band 4.1.
Purification	The antibody was affinity-purified from rabbit antiserum by affinity-chromatography using epitope-specific immunogen.
Clonality	Polyclonal
Concentration	1 mg/ml
Observed band	
Human Gene ID	2995
Human Swiss-Prot Number	P04921
Alternative Names	Glycophorin-C (Glycoconnectin;Glycophorin-D;GPD;Glycoprotein beta;PAS-2';Sialoglycoprotein D;CD antigen CD236)
Background	Glycophorin C (GYPC) is an integral membrane glycoprotein. It is a minor species carried by human erythrocytes, but plays an important role in regulating the mechanical stability of red cells. A number of glycophorin C mutations have been



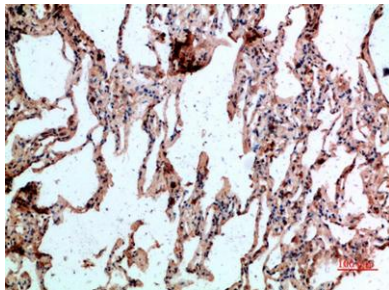


described. The Gerbich and Yus phenotypes are due to deletion of exon 3 and 2, respectively. The Webb and Duch antigens, also known as glycoporphin D, result from single point mutations of the glycoporphin C gene. The glycoporphin C protein has very little homology with glycoporphins A and B. Alternate splicing results in multiple transcript variants. [provided by RefSeq, Feb 2012],

Immunohistochemical analysis of paraffin-embedded human-lung, antibody was diluted at 1:200



Immunohistochemical analysis of paraffin-embedded human-lung, antibody was diluted at 1:200



Immunohistochemical analysis of paraffin-embedded human-spleen, antibody was diluted at 1:200

