



FSH β rabbit pAb

Cat No.:ES8648

For research use only

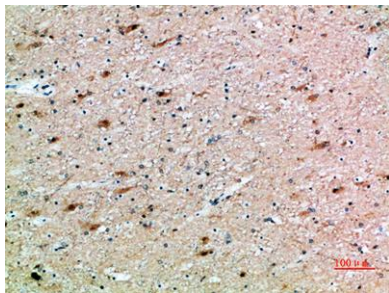
Overview

Product Name	FSH β rabbit pAb
Host species	Rabbit
Applications	IHC;IF;ELISA
Species Cross-Reactivity	Human;Mouse;Rat
Recommended dilutions	IHC-p 1:50-200, ELISA 1:10000-20000
Immunogen	Synthetic peptide from human protein at AA range: 10-50
Specificity	The antibody detects endogenous FSH β
Formulation	Liquid in PBS containing 50% glycerol, 0.5% BSA and 0.02% sodium azide.
Storage	Store at -20°C. Avoid repeated freeze-thaw cycles.
Protein Name	Follitropin subunit beta (Follicle-stimulating hormone beta subunit) (FSH-B) (FSH-beta) (Follitropin beta chain)
Gene Name	FSHB
Cellular localization	Secreted . Efficient secretion requires dimerization with CGA. .
Purification	The antibody was affinity-purified from rabbit antiserum by affinity-chromatography using epitope-specific immunogen.
Clonality	Polyclonal
Concentration	1 mg/ml
Observed band	
Human Gene ID	2488
Human Swiss-Prot Number	P01225
Alternative Names	Follitropin subunit beta (Follicle-stimulating hormone beta subunit;FSH-B;FSH-beta;Follitropin beta chain)
Background	follicle stimulating hormone beta subunit(FSHB) Homo sapiens The pituitary glycoprotein hormone family includes follicle-stimulating hormone, luteinizing hormone, chorionic gonadotropin, and thyroid-stimulating hormone. All



of these glycoproteins consist of an identical alpha subunit and a hormone-specific beta subunit. This gene encodes the beta subunit of follicle-stimulating hormone. In conjunction with luteinizing hormone, follicle-stimulating hormone induces egg and sperm production. Alternative splicing results in two transcript variants encoding the same protein. [provided by RefSeq, Jul 2008],

Immunohistochemical analysis of paraffin-embedded human-brain, antibody was diluted at 1:200



Immunohistochemical analysis of paraffin-embedded human-brain, antibody was diluted at 1:200

