

# TAL1/2 (Acetyl Lys221/Acetyl Lys222/Acetyl Lys36/Acetyl Lys37) rabbit pAb

Cat No.:ES8436

For research use only

## Overview

Product Name	TAL1/2 (Acetyl Lys221/Acetyl Lys222/Acetyl Lys36/Acetyl Lys37) rabbit pAb
Host species	Rabbit
Applications	WB;ELISA
Species Cross-Reactivity	Human;Mouse;Rat
Recommended dilutions	Western Blot: 1/500 - 1/2000. ELISA: 1/10000. Not yet tested in other applications.
Immunogen	Synthesized acetyl-peptide derived from human TAL1/2 around the acetylation site of K221.
Specificity	Acetyl-TAL1/2 (K221/K222/K36/K37) Polyclonal Antibody detects endogenous levels of TAL1/2 around the acetylation site of K221 protein.
Formulation	Liquid in PBS containing 50% glycerol, 0.5% BSA and 0.02% sodium azide.
Storage	Store at -20°C. Avoid repeated freeze-thaw cycles.
Protein Name	T-cell acute lymphocytic leukemia protein 1 homolog/T-cell acute lymphocytic leukemia protein 2
Gene Name	TAL1/TAL2
Cellular localization	Nucleus .
Purification	The antibody was affinity-purified from rabbit antiserum by affinity-chromatography using epitope-specific immunogen.
Clonality	Polyclonal
Concentration	1 mg/ml
Observed band	45kD
Human Gene ID	6886
Human Swiss-Prot Number	P17542
Alternative Names	TAL1; BHLHA17; SCL; TCL5; T-cell acute lymphocytic leukemia protein 1; TAL-1; Class A basic helix-loop-helix protein 17; bHLHa17; Stem cell protein; T-cell leukemia/lymphoma protein 5; TAL2;

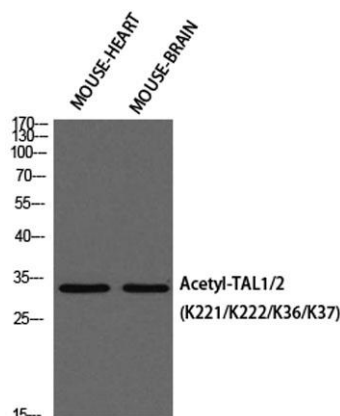




## Background

BHLHA19; T-cell acute lymphocytic leukemia protein 2; TAL-2; Cla

alternative products: The splicing pattern is cell-lineage dependent, disease: A chromosomal aberration involving TAL1 may be a cause of some T-cell acute lymphoblastic leukemias (T-ALL). Translocation t(1;14)(p32;q11) with T-cell receptor alpha chain (TCRA) genes., domain: The helix-loop-helix domain is necessary and sufficient for the interaction with DRG1., function: Implicated in the genesis of hemopoietic malignancies. It may play an important role in hemopoietic differentiation. Serves as a positive regulator of erythroid differentiation., PTM: Phosphorylated on serine residues. Phosphorylation of Ser-122 is strongly stimulated by hypoxia., PTM: Ubiquitinated; subsequent to hypoxia-dependent phosphorylation of Ser-122, ubiquitination targets the protein for rapid degradation via the ubiquitin system. This process may be characteristic for microvascular endothelial cells, since it could not be observed in large vessel endothelial cells., similarity: Contains 1 basic helix-loop-helix (bHLH) domain., subunit: Efficient DNA binding requires dimerization with another bHLH protein. Forms heterodimers with TCF3. Binds to the LIM domain containing protein LMO2 and to DRG1. Can assemble in a complex with LDB1 and LMO2. Component of a TAL-1 complex composed at least of CBFA2T3, LDB1, TAL1 and TCF3., tissue specificity: Leukemic stem cell.,



Western blot analysis of MOUSE-HEART MOUSE-BRAIN using Acetyl-TAL1/2 (K221/K222/K36/K37) antibody. Antibody was diluted at 1:500. Secondary antibody(catalog#:RS0002) was diluted at 1:20000





**ELK Biotechnology**



+86-27-59760950

[ELKbio@ELKbiotech.com](mailto:ELKbio@ELKbiotech.com)

[www.elkbiotech.com](http://www.elkbiotech.com)

23-2, No.388 Gaoxin 2nd Road,Wuhan East Lake Hi-tech Development Zone, Hubei , P.R.C