



# OSR1 rabbit pAb

Cat No.:ES8141

For research use only

## Overview

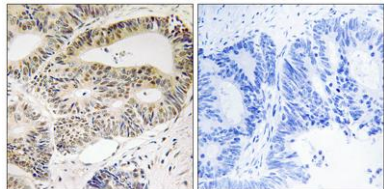
<b>Product Name</b>	OSR1 rabbit pAb
<b>Host species</b>	Rabbit
<b>Applications</b>	IHC;IF;ELISA
<b>Species Cross-Reactivity</b>	Human;Mouse
<b>Recommended dilutions</b>	Immunohistochemistry: 1/100 - 1/300. ELISA: 1/5000. Not yet tested in other applications.
<b>Immunogen</b>	The antiserum was produced against synthesized peptide derived from human OSR1. AA range:151-200
<b>Specificity</b>	OSR1 Polyclonal Antibody detects endogenous levels of OSR1 protein.
<b>Formulation</b>	Liquid in PBS containing 50% glycerol, 0.5% BSA and 0.02% sodium azide.
<b>Storage</b>	Store at -20°C. Avoid repeated freeze-thaw cycles.
<b>Protein Name</b>	Serine/threonine-protein kinase OSR1
<b>Gene Name</b>	OXR1
<b>Cellular localization</b>	Cytoplasm .
<b>Purification</b>	The antibody was affinity-purified from rabbit antiserum by affinity-chromatography using epitope-specific immunogen.
<b>Clonality</b>	Polyclonal
<b>Concentration</b>	1 mg/ml
<b>Observed band</b>	
<b>Human Gene ID</b>	9943
<b>Human Swiss-Prot Number</b>	O95747
<b>Alternative Names</b>	OXR1; KIAA1101; OSR1; Serine/threonine-protein kinase OSR1; Oxidative stress-responsive 1 protein
<b>Background</b>	The product of this gene belongs to the Ser/Thr protein kinase family of proteins. It regulates downstream kinases in response to environmental stress, and may play a role in regulating the actin cytoskeleton. [provided by RefSeq, Jul 2008],





**ELK Biotechnology**

Immunohistochemistry analysis of paraffin-embedded human colon carcinoma tissue, using OSR1 Antibody. The picture on the right is blocked with the synthesized peptide.



+86-27-59760950

[ELKbio@ELKbiotech.com](mailto:ELKbio@ELKbiotech.com)

[www.elkbiotech.com](http://www.elkbiotech.com)

23-2, No.388 Gaoxin 2nd Road,Wuhan East Lake Hi-tech Development Zone, Hubei , P.R.C