



RASSF2 rabbit pAb

Cat No.:ES8098

For research use only

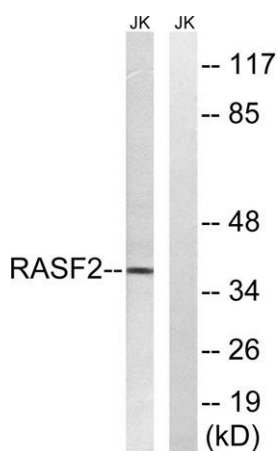
Overview

| | |
|---------------------------------|--|
| Product Name | RASSF2 rabbit pAb |
| Host species | Rabbit |
| Applications | WB;IHC |
| Species Cross-Reactivity | Human;Mouse;Rat |
| Recommended dilutions | WB 1:500-2000;IHC-p 1:50-300 |
| Immunogen | The antiserum was produced against synthesized peptide derived from human RASSF2. AA range:109-158 |
| Specificity | RASSF2 Polyclonal Antibody detects endogenous levels of RASSF2 protein. |
| Formulation | Liquid in PBS containing 50% glycerol, 0.5% BSA and 0.02% sodium azide. |
| Storage | Store at -20°C. Avoid repeated freeze-thaw cycles. |
| Protein Name | Ras association domain-containing protein 2 |
| Gene Name | RASSF2 |
| Cellular localization | Nucleus. Cytoplasm. Chromosome, centromere, kinetochore . Translocates to the cytoplasm in the presence of STK3/MST2 AND STK4/MST1. |
| Purification | The antibody was affinity-purified from rabbit antiserum by affinity-chromatography using epitope-specific immunogen. |
| Clonality | Polyclonal |
| Concentration | 1 mg/ml |
| Observed band | 36kD |
| Human Gene ID | 9770 |
| Human Swiss-Prot Number | P50749 |
| Alternative Names | RASSF2; KIAA0168; Ras association domain-containing protein 2 |
| Background | This gene encodes a protein that contains a Ras association domain. Similar to its cattle and sheep counterparts, this gene is located near the prion gene. Two alternatively spliced transcripts encoding the same isoform have been reported. [provided by |

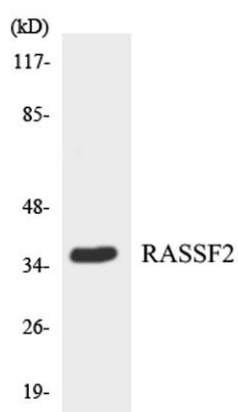




RefSeq, Jul 2008],



Western blot analysis of lysates from Jurkat cells, using RASSF2 Antibody. The lane on the right is blocked with the synthesized peptide.



Western blot analysis of the lysates from HepG2 cells using RASSF2 antibody.



Immunohistochemical analysis of paraffin-embedded human tonsil. 1, Antibody was diluted at 1:200(4° overnight). 2, Tris-EDTA,pH9.0 was used for antigen retrieval. 3,Secondary antibody was diluted at 1:200(room temperature, 45min).

