



ZNF592 rabbit pAb

Cat No.:ES8079

For research use only

Overview

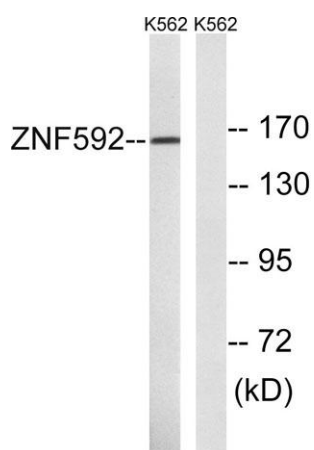
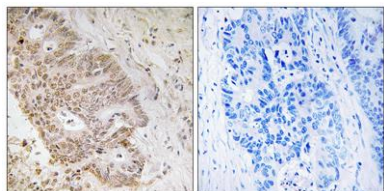
Product Name	ZNF592 rabbit pAb
Host species	Rabbit
Applications	WB;IHC;IF;ELISA
Species Cross-Reactivity	Human;Mouse
Recommended dilutions	Western Blot: 1/500 - 1/2000. Immunohistochemistry: 1/100 - 1/300. ELISA: 1/40000. Not yet tested in other applications.
Immunogen	The antiserum was produced against synthesized peptide derived from human ZNF592. AA range:961-1010
Specificity	ZNF592 Polyclonal Antibody detects endogenous levels of ZNF592 protein.
Formulation	Liquid in PBS containing 50% glycerol, 0.5% BSA and 0.02% sodium azide.
Storage	Store at -20°C. Avoid repeated freeze-thaw cycles.
Protein Name	Zinc finger protein 592
Gene Name	ZNF592
Cellular localization	Nucleus .
Purification	The antibody was affinity-purified from rabbit antiserum by affinity-chromatography using epitope-specific immunogen.
Clonality	Polyclonal
Concentration	1 mg/ml
Observed band	160kD
Human Gene ID	9640
Human Swiss-Prot Number	Q92610
Alternative Names	ZNF592; KIAA0211; Zinc finger protein 592
Background	zinc finger protein 592(ZNF592) Homo sapiens This gene is thought to play a role in a complex developmental pathway and the regulation of genes involved in cerebellar development. Mutations in this gene have been associated with autosomal recessive spinocerebellar ataxia. [provided by





RefSeq, Jan 2011],

Immunohistochemistry analysis of paraffin-embedded human colon carcinoma tissue, using ZNF592 Antibody. The picture on the right is blocked with the synthesized peptide.



Western blot analysis of lysates from K562 cells, using ZNF592 Antibody. The lane on the right is blocked with the synthesized peptide.

