



AKAP 250 rabbit pAb

Cat No.:ES8070

For research use only

Overview

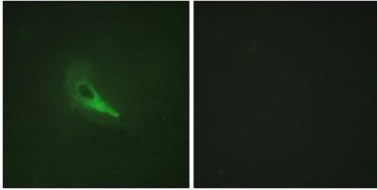
Product Name	AKAP 250 rabbit pAb
Host species	Rabbit
Applications	IHC;IF;ELISA
Species Cross-Reactivity	Human;Rat;Mouse;
Recommended dilutions	Immunohistochemistry: 1/100 - 1/300. Immunofluorescence: 1/200 - 1/1000. ELISA: 1/20000. Not yet tested in other applications.
Immunogen	The antiserum was produced against synthesized peptide derived from human AKAP12. AA range:301-350
Specificity	AKAP 250 Polyclonal Antibody detects endogenous levels of AKAP 250 protein.
Formulation	Liquid in PBS containing 50% glycerol, 0.5% BSA and 0.02% sodium azide.
Storage	Store at -20°C. Avoid repeated freeze-thaw cycles.
Protein Name	A-kinase anchor protein 12
Gene Name	AKAP12
Cellular localization	Cytoplasm, cell cortex . Cytoplasm, cytoskeleton . Membrane ; Lipid-anchor . May be part of the cortical cytoskeleton.
Purification	The antibody was affinity-purified from rabbit antiserum by affinity-chromatography using epitope-specific immunogen.
Clonality	Polyclonal
Concentration	1 mg/ml
Observed band	
Human Gene ID	9590
Human Swiss-Prot Number	Q02952
Alternative Names	AKAP12; AKAP250; A-kinase anchor protein 12; AKAP-12; A-kinase anchor protein 250 kDa; AKAP 250; Gravin; Myasthenia gravis autoantigen
Background	The A-kinase anchor proteins (AKAPs) are a group of structurally diverse proteins, which have the





common function of binding to the regulatory subunit of protein kinase A (PKA) and confining the holoenzyme to discrete locations within the cell. This gene encodes a member of the AKAP family. The encoded protein is expressed in endothelial cells, cultured fibroblasts, and osteosarcoma cells. It associates with protein kinases A and C and phosphatase, and serves as a scaffold protein in signal transduction. This protein and RII PKA colocalize at the cell periphery. This protein is a cell growth-related protein. Antibodies to this protein can be produced by patients with myasthenia gravis. Alternative splicing of this gene results in two transcript variants encoding different isoforms. [provided by RefSeq, Jul 2008],

Immunofluorescence analysis of HeLa cells, using AKAP12 Antibody. The picture on the right is blocked with the synthesized peptide.



Immunohistochemistry analysis of paraffin-embedded human brain tissue, using AKAP12 Antibody. The picture on the right is blocked with the synthesized peptide.

