



X11 γ rabbit pAb

Cat No.:ES8056

For research use only

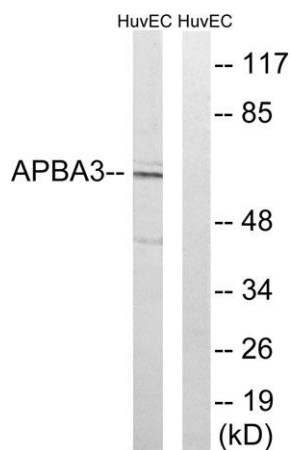
Overview

Product Name	X11 γ rabbit pAb
Host species	Rabbit
Applications	WB;IHC;IF;ELISA
Species Cross-Reactivity	Human;Rat;Mouse;
Recommended dilutions	Western Blot: 1/500 - 1/2000. Immunohistochemistry: 1/100 - 1/300. ELISA: 1/40000. Not yet tested in other applications.
Immunogen	The antiserum was produced against synthesized peptide derived from human APBA3. AA range:361-410
Specificity	X11 γ Polyclonal Antibody detects endogenous levels of X11 γ protein.
Formulation	Liquid in PBS containing 50% glycerol, 0.5% BSA and 0.02% sodium azide.
Storage	Store at -20°C. Avoid repeated freeze-thaw cycles.
Protein Name	Amyloid beta A4 precursor protein-binding family A member 3
Gene Name	APBA3
Cellular localization	Cytoplasm, perinuclear region .
Purification	The antibody was affinity-purified from rabbit antiserum by affinity-chromatography using epitope-specific immunogen.
Clonality	Polyclonal
Concentration	1 mg/ml
Observed band	61kD
Human Gene ID	9546
Human Swiss-Prot Number	O96018
Alternative Names	APBA3; MINT3; X11L2; Amyloid beta A4 precursor protein-binding family A member 3; Adapter protein X11gamma; Neuron-specific X11L2 protein; Neuronal Munc18-1-interacting protein 3; Mint-3 amyloid beta precursor protein binding family A member 3(APBA3) Homo sapiens The protein
Background	

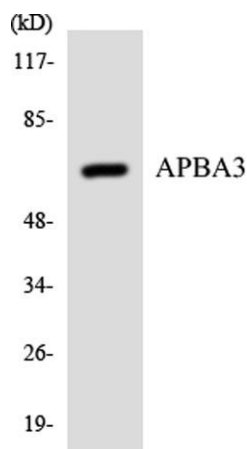




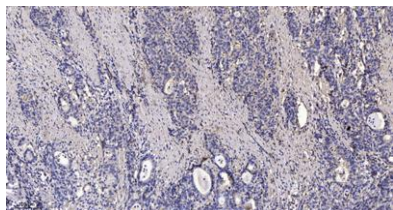
encoded by this gene is a member of the X11 protein family. It is an adapter protein that interacts with the Alzheimer's disease amyloid precursor protein. This gene product is believed to be involved in signal transduction processes. This gene is a candidate gene for Alzheimer's disease. [provided by RefSeq, Jul 2008],



Western blot analysis of lysates from HUVEC cells, using APBA3 Antibody. The lane on the right is blocked with the synthesized peptide.



Western blot analysis of the lysates from COLO205 cells using APBA3 antibody.



Immunohistochemical analysis of paraffin-embedded human Gastric adenocarcinoma. 1, Antibody was diluted at 1:200(4° overnight). 2, Tris-EDTA,pH9.0 was used for antigen retrieval. 3,Secondary antibody was diluted at 1:200(room temperature, 45min).

