



TWIK-2 rabbit pAb

Cat No.:ES8042

For research use only

Overview

Product Name	TWIK-2 rabbit pAb
Host species	Rabbit
Applications	WB;ELISA
Species Cross-Reactivity	Human;Rat;Mouse;
Recommended dilutions	Western Blot: 1/500 - 1/2000. ELISA: 1/5000. Not yet tested in other applications.
Immunogen	Synthesized peptide derived from TWIK-2 . at AA range: 240-320
Specificity	TWIK-2 Polyclonal Antibody detects endogenous levels of TWIK-2 protein.
Formulation	Liquid in PBS containing 50% glycerol, 0.5% BSA and 0.02% sodium azide.
Storage	Store at -20°C. Avoid repeated freeze-thaw cycles.
Protein Name	Potassium channel subfamily K member 6
Gene Name	KCNK6
Cellular localization	Membrane ; Multi-pass membrane protein .
Purification	The antibody was affinity-purified from rabbit antiserum by affinity-chromatography using epitope-specific immunogen.
Clonality	Polyclonal
Concentration	1 mg/ml
Observed band	33kD
Human Gene ID	9424
Human Swiss-Prot Number	Q9Y257
Alternative Names	KCNK6; TOSS; TWIK2; Potassium channel subfamily K member 6; Inward rectifying potassium channel protein TWIK-2; TWIK-originated similarity sequence
Background	This gene encodes one of the members of the superfamily of potassium channel proteins containing two pore-forming P domains. This channel protein, considered an open rectifier, is widely expressed. It is stimulated by arachidonic acid, and inhibited by internal acidification and

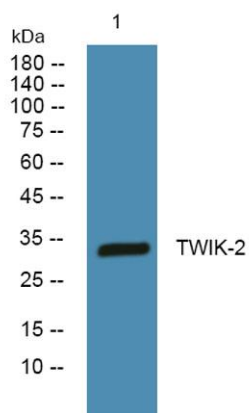




ELK Biotechnology

volatile anaesthetics. [provided by RefSeq, Jul 2008],

Western blot analysis of lysates from DU145 cells, primary antibody was diluted at 1:1000, 4° over night



+86-27-59760950

ELKbio@ELKbiotech.com

www.elkbiotech.com

23-2, No.388 Gaoxin 2nd Road, Wuhan East Lake Hi-tech Development Zone, Hubei, P.R.C