



CYP7B1 rabbit pAb

Cat No.:ES8038

For research use only

Overview

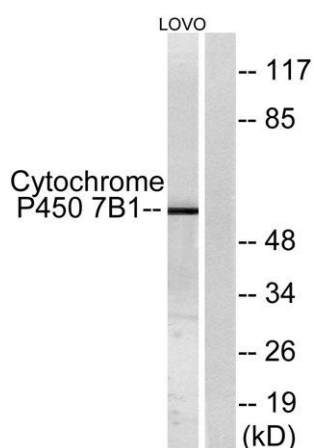
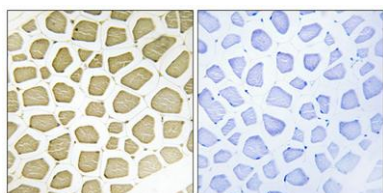
Product Name	CYP7B1 rabbit pAb
Host species	Rabbit
Applications	WB;IHC;IF;ELISA
Species Cross-Reactivity	Human;Rat;Mouse;
Recommended dilutions	Western Blot: 1/500 - 1/2000. Immunohistochemistry: 1/100 - 1/300. ELISA: 1/40000. Not yet tested in other applications.
Immunogen	The antiserum was produced against synthesized peptide derived from human Cytochrome P450 7B1. AA range:101-150
Specificity	CYP7B1 Polyclonal Antibody detects endogenous levels of CYP7B1 protein.
Formulation	Liquid in PBS containing 50% glycerol, 0.5% BSA and 0.02% sodium azide.
Storage	Store at -20°C. Avoid repeated freeze-thaw cycles.
Protein Name	25-hydroxycholesterol 7-alpha-hydroxylase
Gene Name	CYP7B1
Cellular localization	Endoplasmic reticulum membrane ; Multi-pass membrane protein . Microsome membrane ; Multi-pass membrane protein .
Purification	The antibody was affinity-purified from rabbit antiserum by affinity-chromatography using epitope-specific immunogen.
Clonality	Polyclonal
Concentration	1 mg/ml
Observed band	58kD
Human Gene ID	9420
Human Swiss-Prot Number	O75881
Alternative Names	CYP7B1; 25-hydroxycholesterol 7-alpha-hydroxylase; Cytochrome P450 7B1; Oxysterol 7-alpha-hydroxylase
Background	This gene encodes a member of the cytochrome P450 superfamily of enzymes. The cytochrome P450





proteins are monooxygenases which catalyze many reactions involved in drug metabolism and synthesis of cholesterol, steroids and other lipids. This endoplasmic reticulum membrane protein catalyzes the first reaction in the cholesterol catabolic pathway of extrahepatic tissues, which converts cholesterol to bile acids. This enzyme likely plays a minor role in total bile acid synthesis, but may also be involved in the development of atherosclerosis, neurosteroid metabolism and sex hormone synthesis. Mutations in this gene have been associated with hereditary spastic paraplegia (SPG5 or HSP), an autosomal recessive disorder. [provided by RefSeq, Apr 2016],

Immunohistochemical analysis of paraffin-embedded Human skeletal muscle. Antibody was diluted at 1:100(4° overnight). High-pressure and temperature Tris-EDTA,pH8.0 was used for antigen retrieval. Negative contrl (right) obtained from antibody was pre-abs



Western blot analysis of lysates from LOVO cells, using Cytochrome P450 7B1 Antibody. The lane on the right is blocked with the synthesized peptide.

