



TFIIIC90 rabbit pAb

Cat No.:ES8022

For research use only

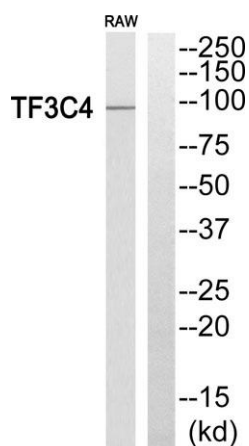
Overview

Product Name	TFIIIC90 rabbit pAb
Host species	Rabbit
Applications	WB;ELISA
Species Cross-Reactivity	Human;Rat;Mouse;
Recommended dilutions	Western Blot: 1/500 - 1/2000. ELISA: 1/20000. Not yet tested in other applications.
Immunogen	The antiserum was produced against synthesized peptide derived from human TF3C4. AA range:611-660
Specificity	TFIIIC90 Polyclonal Antibody detects endogenous levels of TFIIIC90 protein.
Formulation	Liquid in PBS containing 50% glycerol, 0.5% BSA and 0.02% sodium azide.
Storage	Store at -20°C. Avoid repeated freeze-thaw cycles.
Protein Name	General transcription factor 3C polypeptide 4
Gene Name	GTF3C4
Cellular localization	Nucleus.
Purification	The antibody was affinity-purified from rabbit antiserum by affinity-chromatography using epitope-specific immunogen.
Clonality	Polyclonal
Concentration	1 mg/ml
Observed band	95kD
Human Gene ID	9329
Human Swiss-Prot Number	Q9UKN8
Alternative Names	GTF3C4; General transcription factor 3C polypeptide 4; TF3C-delta; Transcription factor IIIC 90 kDa subunit; TFIIIC 90 kDa subunit; TFIIIC90; Transcription factor IIIC subunit delta
Background	catalytic activity:Acetyl-CoA + histone = CoA + acetylhistone.,function:Essential for RNA polymerase III to make a number of small nuclear and cytoplasmic RNAs, including 5S RNA, tRNA, and

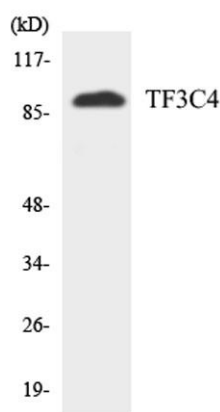




adenovirus-associated (VA) RNA of both cellular and viral origin. Has histone acetyltransferase activity (HAT) with unique specificity for free and nucleosomal H3. May cooperate with GTF3C5 in facilitating the recruitment of TFIIB and RNA polymerase through direct interactions with BRF1, POLR3C and POLR3F. May be localized close to the A box.,sequence caution:Contaminating sequence. Potential poly-A sequence.,similarity:Belongs to the TFIIC subunit 4 family.,subunit:Part of the TFIIC subcomplex TFIIC2, consisting of six subunits, GTF3C1, GTF3C2, GTF3C3, GTF3C4, GTF3C5 and GTF3C6. Interacts with BRF1, GTF3C1, GTF3C2, GTF3C5, GTF3C6, POLR3C and POLR3F.,



Western blot analysis of TF3C4 Antibody. The lane on the right is blocked with the TF3C4 peptide.



Western blot analysis of the lysates from HUVEC cells using TF3C4 antibody.

