



Rab 11B rabbit pAb

Cat No.:ES7996

For research use only

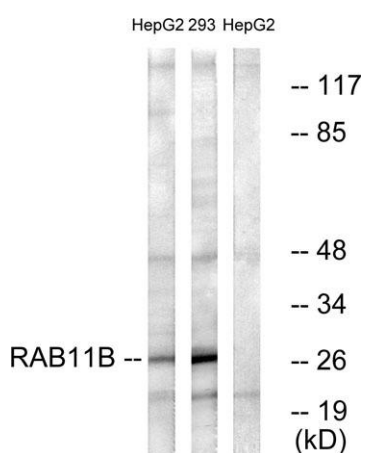
Overview

Product Name	Rab 11B rabbit pAb
Host species	Rabbit
Applications	WB;IHC
Species Cross-Reactivity	Human;Mouse;Rat
Recommended dilutions	WB 1:500-2000;IHC-p 1:50-300
Immunogen	The antiserum was produced against synthesized peptide derived from human RAB11B. AA range:164-213
Specificity	Rab 11B Polyclonal Antibody detects endogenous levels of Rab 11B protein.
Formulation	Liquid in PBS containing 50% glycerol, 0.5% BSA and 0.02% sodium azide.
Storage	Store at -20°C. Avoid repeated freeze-thaw cycles.
Protein Name	Ras-related protein Rab-11B
Gene Name	RAB11B
Cellular localization	Recycling endosome membrane ; Lipid-anchor ; Cytoplasmic side . Cytoplasmic vesicle, secretory vesicle, synaptic vesicle membrane ; Lipid-anchor ; Cytoplasmic side . Cytoplasmic vesicle, phagosome membrane ; Lipid-anchor ; Cytoplasmic side . Recruited to
Purification	The antibody was affinity-purified from rabbit antiserum by affinity-chromatography using epitope-specific immunogen.
Clonality	Polyclonal
Concentration	1 mg/ml
Observed band	28kD
Human Gene ID	9230
Human Swiss-Prot Number	Q15907
Alternative Names	RAB11B; YPT3; Ras-related protein Rab-11B; GTP-binding protein YPT3
Background	The Ras superfamily of small GTP-binding proteins, which includes the Ras (see MIM 190020), Ral (see

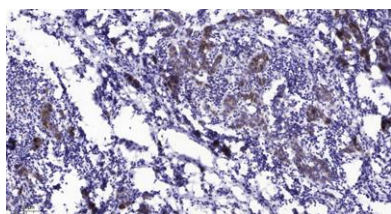




MIM 179550), Rho (see MIM 165390), Rap (see MIM 179520), and Rab (see MIM 179508) families, is involved in controlling a diverse set of essential cellular functions. The Rab family, including RAB11B, appears to play a critical role in regulating exocytotic and endocytotic pathways (summary by Zhu et al., 1994 [PubMed 7811277]).[supplied by OMIM, Nov 2010],



Western blot analysis of lysates from HepG2 and 293 cells, using RAB11B Antibody. The lane on the right is blocked with the synthesized peptide.



Immunohistochemical analysis of paraffin-embedded human Breast cancer. 1, Antibody was diluted at 1:200(4° overnight). 2, Tris-EDTA,pH9.0 was used for antigen retrieval. 3,Secondary antibody was diluted at 1:200(room temperature, 45min).

