



Socius rabbit pAb

Cat No.:ES7972

For research use only

Overview

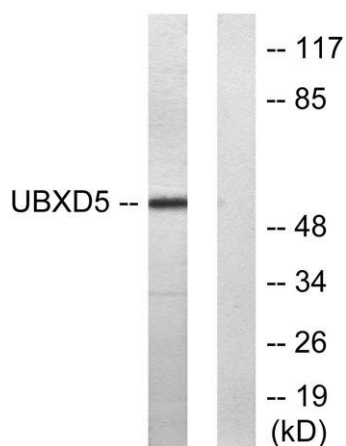
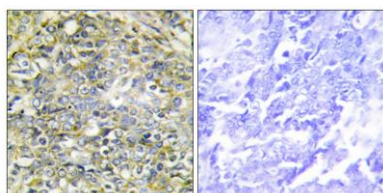
Product Name	Socius rabbit pAb
Host species	Rabbit
Applications	WB;IHC;IF;ELISA
Species Cross-Reactivity	Human;Rat;Mouse;
Recommended dilutions	Western Blot: 1/500 - 1/2000. Immunohistochemistry: 1/100 - 1/300. Immunofluorescence: 1/200 - 1/1000. ELISA: 1/20000. Not yet tested in other applications.
Immunogen	The antiserum was produced against synthesized peptide derived from human UBXD5. AA range:131-180
Specificity	Socius Polyclonal Antibody detects endogenous levels of Socius protein.
Formulation	Liquid in PBS containing 50% glycerol, 0.5% BSA and 0.02% sodium azide.
Storage	Store at -20°C. Avoid repeated freeze-thaw cycles.
Protein Name	UBX domain-containing protein 11
Gene Name	UBXN11
Cellular localization	Cytoplasm, cytoskeleton .
Purification	The antibody was affinity-purified from rabbit antiserum by affinity-chromatography using epitope-specific immunogen.
Clonality	Polyclonal
Concentration	1 mg/ml
Observed band	57kD
Human Gene ID	91544
Human Swiss-Prot Number	Q5T124
Alternative Names	UBXN11; SOC; UBXD5; PP2243; UBX domain-containing protein 11; Colorectal tumor-associated antigen COA-1; Socius; UBX domain-containing protein 5
Background	This gene encodes a protein with a divergent C-terminal UBX domain. The homologous protein in





the rat interacts with members of the Rnd subfamily of Rho GTPases at the cell periphery through its C-terminal region. It also interacts with several heterotrimeric G proteins through their G-alpha subunits and promotes Rho GTPase activation. It is proposed to serve a bidirectional role in the promotion and inhibition of Rho activity through upstream signaling pathways. The 3' coding sequence of this gene contains a polymorphic region of 24 nt tandem repeats. Several transcripts containing between 1.5 and five repeat units have been reported. Multiple transcript variants encoding different isoforms have been found for this gene. [provided by RefSeq, Jul 2008],

Immunohistochemistry analysis of paraffin-embedded human lung carcinoma tissue, using UBXD5 Antibody. The picture on the right is blocked with the synthesized peptide.



Western blot analysis of lysates from HepG2 cells, using UBXD5 Antibody. The lane on the right is blocked with the synthesized peptide.

