



COL23A1 rabbit pAb

Cat No.:ES7971

For research use only

Overview

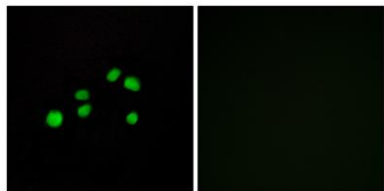
Product Name	COL23A1 rabbit pAb
Host species	Rabbit
Applications	IF;ELISA
Species Cross-Reactivity	Human;Mouse;Rat
Recommended dilutions	Immunofluorescence: 1/200 - 1/1000. ELISA: 1/10000. Not yet tested in other applications.
Immunogen	The antiserum was produced against synthesized peptide derived from human Collagen XXIII alpha1. AA range:461-510
Specificity	COL23A1 Polyclonal Antibody detects endogenous levels of COL23A1 protein.
Formulation	Liquid in PBS containing 50% glycerol, 0.5% BSA and 0.02% sodium azide.
Storage	Store at -20°C. Avoid repeated freeze-thaw cycles.
Protein Name	Collagen alpha-1(XXIII) chain
Gene Name	COL23A1
Cellular localization	Cell membrane ; Single-pass type II membrane protein ; Extracellular side .
Purification	The antibody was affinity-purified from rabbit antiserum by affinity-chromatography using epitope-specific immunogen.
Clonality	Polyclonal
Concentration	1 mg/ml
Observed band	
Human Gene ID	91522
Human Swiss-Prot Number	Q86Y22
Alternative Names	COL23A1; Collagen alpha-1(XXIII) chain
Background	COL23A1 is a member of the transmembrane collagens, a subfamily of the nonfibrillar collagens that contain a single pass hydrophobic transmembrane domain (Banyard et al., 2003 [PubMed 12644459]).[supplied by OMIM, Mar 2008],





ELK Biotechnology

Immunofluorescence analysis of HepG2 cells, using Collagen XXIII alpha1 Antibody. The picture on the right is blocked with the synthesized peptide.



+86-27-59760950

ELKbio@ELKbiotech.com

www.elkbiotech.com

23-2, No.388 Gaoxin 2nd Road,Wuhan East Lake Hi-tech Development Zone, Hubei , P.R.C