

Hrs (phospho Tyr334) rabbit pAb

Cat No.:ES7968

For research use only

Overview

Product Name	Hrs (phospho Tyr334) rabbit pAb
Host species	Rabbit
Applications	WB;IHC;IF;ELISA
Species Cross-Reactivity	Human;Mouse;Rat
Recommended dilutions	Western Blot: 1/500 - 1/2000. Immunohistochemistry: 1/100 - 1/300. Immunofluorescence: 1/200 - 1/1000. ELISA: 1/10000. Not yet tested in other applications.
Immunogen	The antiserum was produced against synthesized peptide derived from human HRS around the phosphorylation site of Tyr334. AA range:301-350
Specificity	Phospho-Hrs (Y334) Polyclonal Antibody detects endogenous levels of Hrs protein only when phosphorylated at Y334.
Formulation	Liquid in PBS containing 50% glycerol, 0.5% BSA and 0.02% sodium azide.
Storage	Store at -20°C. Avoid repeated freeze-thaw cycles.
Protein Name	Hepatocyte growth factor-regulated tyrosine kinase substrate
Gene Name	HGS
Cellular localization	Cytoplasm . Early endosome membrane ; Peripheral membrane protein ; Cytoplasmic side . Endosome, multivesicular body membrane ; Peripheral membrane protein . Colocalizes with UBQLN1 in ubiquitin-rich cytoplasmic aggregates that are not endocytic compartments. .
Purification	The antibody was affinity-purified from rabbit antiserum by affinity-chromatography using epitope-specific immunogen.
Clonality	Polyclonal
Concentration	1 mg/ml
Observed band	86kD
Human Gene ID	9146





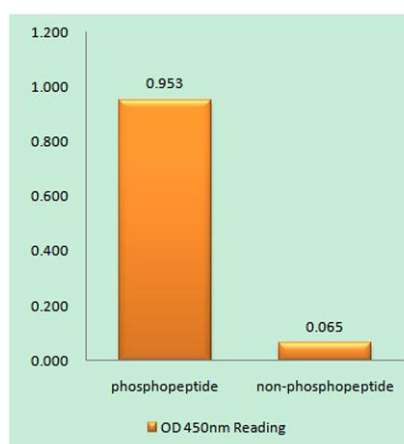
Human Swiss-Prot Number
Alternative Names

O14964

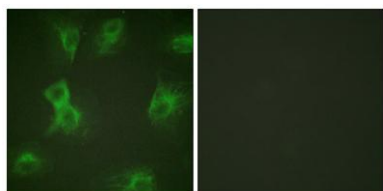
HGS; HRS; Hepatocyte growth factor-regulated tyrosine kinase substrate; Hrs; Protein pp110

Background

The protein encoded by this gene regulates endosomal sorting and plays a critical role in the recycling and degradation of membrane receptors. The encoded protein sorts monoubiquitinated membrane proteins into the multivesicular body, targeting these proteins for lysosome-dependent degradation. [provided by RefSeq, Dec 2010],



Enzyme-Linked Immunosorbent Assay (Phospho-ELISA) for Immunogen Phosphopeptide (Phospho-left) and Non-Phosphopeptide (Phospho-right), using HRS (Phospho-Tyr334) Antibody

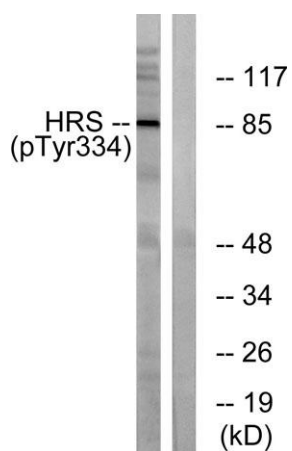
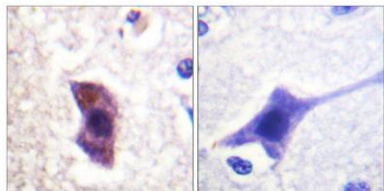


Immunofluorescence analysis of HeLa cells treated with Forskolin 40nM 15', using HRS (Phospho-Tyr334) Antibody. The picture on the right is blocked with the phosphopeptide.





Immunohistochemistry analysis of paraffin-embedded human brain, using HRS (Phospho-Tyr334) Antibody. The picture on the right is blocked with the phospho peptide.



Western blot analysis of lysates from HepG2 cells treated with PMA 125ng/ml 30', using HRS (Phospho-Tyr334) Antibody. The lane on the right is blocked with the phospho peptide.

