



eIF1AY rabbit pAb

Cat No.:ES7955

For research use only

Overview

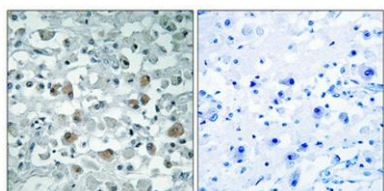
Product Name	eIF1AY rabbit pAb
Host species	Rabbit
Applications	IHC;IF;ELISA
Species Cross-Reactivity	Human;Mouse;Rat
Recommended dilutions	Immunohistochemistry: 1/100 - 1/300. ELISA: 1/40000. Not yet tested in other applications.
Immunogen	The antiserum was produced against synthesized peptide derived from human EIF1AY. AA range:21-70
Specificity	eIF1AY Polyclonal Antibody detects endogenous levels of eIF1AY protein.
Formulation	Liquid in PBS containing 50% glycerol, 0.5% BSA and 0.02% sodium azide.
Storage	Store at -20°C. Avoid repeated freeze-thaw cycles.
Protein Name	Eukaryotic translation initiation factor 1A Y-chromosomal
Gene Name	EIF1AY
Cellular localization	
Purification	The antibody was affinity-purified from rabbit antiserum by affinity-chromatography using epitope-specific immunogen.
Clonality	Polyclonal
Concentration	1 mg/ml
Observed band	
Human Gene ID	9086
Human Swiss-Prot Number	O14602
Alternative Names	EIF1AY; Eukaryotic translation initiation factor 1A; Y-chromosomal; eIF-1A Y isoform; Eukaryotic translation initiation factor 4C; eIF-4C
Background	This gene is located on the non-recombining region of the Y chromosome. It encodes a protein related to eukaryotic translation initiation factor 1A (EIF1A), which may function in stabilizing the binding of the initiator Met-tRNA to 40S ribosomal subunits.





Alternative splicing results in multiple transcript variants. [provided by RefSeq, Jul 2013],

Immunohistochemical analysis of paraffin-embedded Human brain. Antibody was diluted at 1:100(4° overnight). High-pressure and temperature Tris-EDTA,pH8.0 was used for antigen retrieval. Negative contrl (right) obtained from antibody was pre-absorbed by i



Immunohistochemistry analysis of paraffin-embedded human colon carcinoma tissue, using EIF1AY Antibody. The picture on the right is blocked with the synthesized peptide.

