



# Atg16L2 rabbit pAb

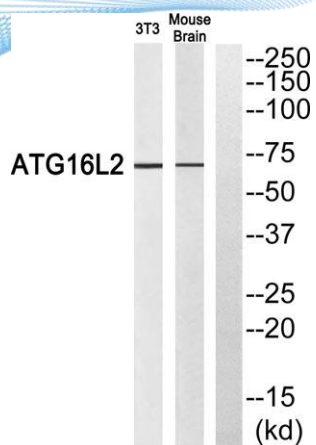
Cat No.:ES7922

For research use only

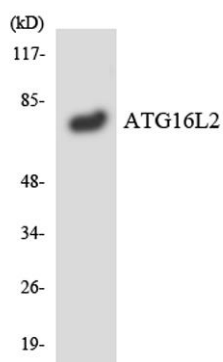
## Overview

<b>Product Name</b>	Atg16L2 rabbit pAb
<b>Host species</b>	Rabbit
<b>Applications</b>	WB;ELISA
<b>Species Cross-Reactivity</b>	Human;Rat;Mouse;
<b>Recommended dilutions</b>	Western Blot: 1/500 - 1/2000. ELISA: 1/20000. Not yet tested in other applications.
<b>Immunogen</b>	The antiserum was produced against synthesized peptide derived from human ATG16L2. AA range:241-290
<b>Specificity</b>	Atg16L2 Polyclonal Antibody detects endogenous levels of Atg16L2 protein.
<b>Formulation</b>	Liquid in PBS containing 50% glycerol, 0.5% BSA and 0.02% sodium azide.
<b>Storage</b>	Store at -20°C. Avoid repeated freeze-thaw cycles.
<b>Protein Name</b>	Autophagy-related protein 16-2
<b>Gene Name</b>	ATG16L2
<b>Cellular localization</b>	Cytoplasm, cytosol . Localizes also to discrete punctae along the ciliary axoneme. .
<b>Purification</b>	The antibody was affinity-purified from rabbit antiserum by affinity-chromatography using epitope-specific immunogen.
<b>Clonality</b>	Polyclonal
<b>Concentration</b>	1 mg/ml
<b>Observed band</b>	70kD
<b>Human Gene ID</b>	89849
<b>Human Swiss-Prot Number</b>	Q8NAA4
<b>Alternative Names</b>	ATG16L2; WDR80; Autophagy-related protein 16-2; APG16-like 2; WD repeat-containing protein 80
<b>Background</b>	function:May play a role in autophagy.,similarity:Belongs to the WD repeat ATG16 family.,similarity:Contains 7 WD repeats.,





Western blot analysis of ATG16L2 Antibody. The lane on the right is blocked with the ATG16L2 peptide.



Western blot analysis of the lysates from RAW264.7 cells using ATG16L2 antibody.

