



GANP rabbit pAb

Cat No.:ES7902

For research use only

Overview

Product Name	GANP rabbit pAb
Host species	Rabbit
Applications	WB;IHC;IF;ELISA
Species Cross-Reactivity	Human;Mouse
Recommended dilutions	Western Blot: 1/500 - 1/2000. Immunohistochemistry: 1/100 - 1/300. ELISA: 1/40000. Not yet tested in other applications.
Immunogen	The antiserum was produced against synthesized peptide derived from human GANP. AA range:1841-1890
Specificity	GANP Polyclonal Antibody detects endogenous levels of GANP protein.
Formulation	Liquid in PBS containing 50% glycerol, 0.5% BSA and 0.02% sodium azide.
Storage	Store at -20°C. Avoid repeated freeze-thaw cycles.
Protein Name	80 kDa MCM3-associated protein
Gene Name	MCM3AP
Cellular localization	[Isoform GANP]: Nucleus envelope . Nucleus, nuclear pore complex . Nucleus, nucleoplasm . Chromosome . Predominantly located at the nuclear envelope, facing the nucleus interior (PubMed:20005110, PubMed:21195085, PubMed:23591820). Localization at the nucl
Purification	The antibody was affinity-purified from rabbit antiserum by affinity-chromatography using epitope-specific immunogen.
Clonality	Polyclonal
Concentration	1 mg/ml
Observed band	218kD
Human Gene ID	8888
Human Swiss-Prot Number	O60318
Alternative Names	MCM3AP; GANP; KIAA0572; MAP80; 80 kDa MCM3-associated protein; Protein GANP

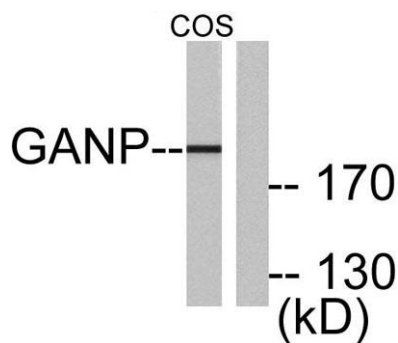
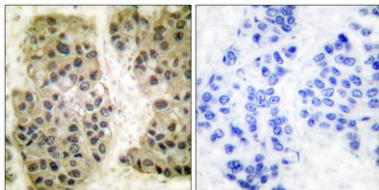




Background

The minichromosome maintenance protein 3 (MCM3) is one of the MCM proteins essential for the initiation of DNA replication. The protein encoded by this gene is a MCM3 binding protein. It was reported to have phosphorylation-dependent DNA-primase activity, which was up-regulated in antigen immunization induced germinal center. This protein was demonstrated to be an acetyltransferase that acetylates MCM3 and plays a role in DNA replication. The mutagenesis of a nuclear localization signal of MCM3 affects the binding of this protein with MCM3, suggesting that this protein may also facilitate MCM3 nuclear localization. This gene is expressed in the brain or in neuronal tissue. An allelic variant encoding amino acid Lys at 915, instead of conserved Glu, has been identified in patients with mild intellectual disability. [provided by RefSeq, Jan 2014],

Immunohistochemistry analysis of paraffin-embedded human breast carcinoma tissue, using GANP Antibody. The picture on the right is blocked with the synthesized peptide.



Western blot analysis of lysates from COS7 cells, using GANP Antibody. The lane on the right is blocked with the synthesized peptide.

