



ZNF232 rabbit pAb

Cat No.:ES7549

For research use only

Overview

Product Name	ZNF232 rabbit pAb
Host species	Rabbit
Applications	IHC;IF;ELISA
Species Cross-Reactivity	Human;Rat;Mouse;
Recommended dilutions	Immunohistochemistry: 1/100 - 1/300. ELISA: 1/5000. Not yet tested in other applications.
Immunogen	The antiserum was produced against synthesized peptide derived from human ZNF232. AA range:171-220
Specificity	ZNF232 Polyclonal Antibody detects endogenous levels of ZNF232 protein.
Formulation	Liquid in PBS containing 50% glycerol, 0.5% BSA and 0.02% sodium azide.
Storage	Store at -20°C. Avoid repeated freeze-thaw cycles.
Protein Name	Zinc finger protein 232
Gene Name	ZNF232
Cellular localization	Nucleus.
Purification	The antibody was affinity-purified from rabbit antiserum by affinity-chromatography using epitope-specific immunogen.
Clonality	Polyclonal
Concentration	1 mg/ml
Observed band	
Human Gene ID	7775
Human Swiss-Prot Number	Q9UNY5
Alternative Names	ZNF232; ZSCAN11; Zinc finger protein 232; Zinc finger and SCAN domain-containing protein 11
Background	function:May be involved in transcriptional regulation.,similarity:Belongs to the krueppel C2H2-type zinc-finger protein family.,similarity:Contains 1 SCAN box domain.,similarity:Contains 5 C2H2-type zinc fingers.,tissue specificity:Ubiquitous. Higher

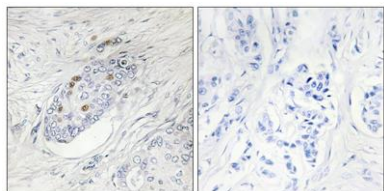




ELK Biotechnology

expression seen in the liver, testis and ovary.,

Immunohistochemistry analysis of paraffin-embedded human breast carcinoma, using ZNF232 Antibody. The picture on the right is blocked with the synthesized peptide.



+86-27-59760950

ELKbio@ELKbiotech.com

www.elkbiotech.com

23-2, No.388 Gaoxin 2nd Road,Wuhan East Lake Hi-tech Development Zone, Hubei , P.R.C