



# TPD52 rabbit pAb

Cat No.:ES7441

For research use only

## Overview

<b>Product Name</b>	TPD52 rabbit pAb
<b>Host species</b>	Rabbit
<b>Applications</b>	IHC;IF;ELISA
<b>Species Cross-Reactivity</b>	Human;Mouse
<b>Recommended dilutions</b>	Immunohistochemistry: 1/100 - 1/300. ELISA: 1/40000. Not yet tested in other applications.
<b>Immunogen</b>	The antiserum was produced against synthesized peptide derived from human TPD52. AA range:41-90
<b>Specificity</b>	TPD52 Polyclonal Antibody detects endogenous levels of TPD52 protein.
<b>Formulation</b>	Liquid in PBS containing 50% glycerol, 0.5% BSA and 0.02% sodium azide.
<b>Storage</b>	Store at -20°C. Avoid repeated freeze-thaw cycles.
<b>Protein Name</b>	Tumor protein D52
<b>Gene Name</b>	TPD52
<b>Cellular localization</b>	cytoplasm,endoplasmic reticulum,perinuclear region of cytoplasm,
<b>Purification</b>	The antibody was affinity-purified from rabbit antiserum by affinity-chromatography using epitope-specific immunogen.
<b>Clonality</b>	Polyclonal
<b>Concentration</b>	1 mg/ml
<b>Observed band</b>	
<b>Human Gene ID</b>	7163
<b>Human Swiss-Prot Number</b>	P55327
<b>Alternative Names</b>	TPD52; Tumor protein D52; Protein N8
<b>Background</b>	caution:The sequence shown here is derived from an Ensembl automatic analysis pipeline and should be considered as preliminary data.,developmental stage:Isoform 2 is expressed at lower levels in fetal brain and kidney than in adult brain and kidney.,similarity:Belongs to the TPD52 family.,subunit:Forms homodimer or heterodimer

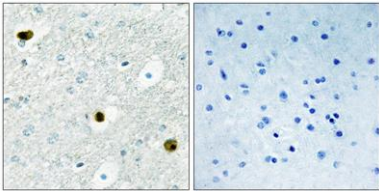




**ELK Biotechnology**

with other members of the family.,tissue specificity:Isoform 2 is expressed in colon, breast, prostate, pancreas and kidney tumor cell lines. Isoform 2 is expressed at high levels in kidney, prostate, brain, small intestine and pancreas, at moderate levels in placenta and colon, at low levels in lung, liver and heart, and at very low levels in spleen, thymus, peripheral mononuclear blood cells, testis and ovary.,

Immunohistochemistry analysis of paraffin-embedded human brain tissue, using TPD52 Antibody. The picture on the right is blocked with the synthesized peptide.



+86-27-59760950

[ELKbio@ELKbiotech.com](mailto:ELKbio@ELKbiotech.com)

[www.elkbiotech.com](http://www.elkbiotech.com)

23-2, No.388 Gaoxin 2nd Road,Wuhan East Lake Hi-tech Development Zone, Hubei , P.R.C