

mtTFA rabbit pAb

Cat No.:ES7375

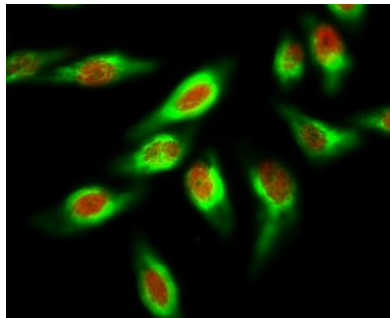
For research use only

Overview

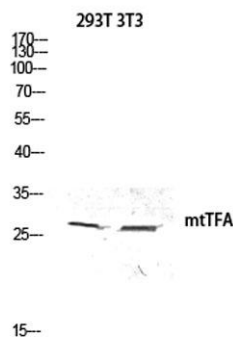
Product Name	mtTFA rabbit pAb
Host species	Rabbit
Applications	WB;IHC;IF;ELISA
Species Cross-Reactivity	Human;Rat;Mouse;;Bovine
Recommended dilutions	WB 1:500-2000;Immunohistochemistry: 1/100 - 1/300. Immunofluorescence: 1/200 - 1/1000. ELISA: 1/20000. Not yet tested in other applications.
Immunogen	The antiserum was produced against synthesized peptide derived from human TFAM. AA range:131-180
Specificity	mtTFA Polyclonal Antibody detects endogenous levels of mtTFA protein.
Formulation	Liquid in PBS containing 50% glycerol, 0.5% BSA and 0.02% sodium azide.
Storage	Store at -20°C. Avoid repeated freeze-thaw cycles.
Protein Name	Transcription factor A mitochondrial
Gene Name	TFAM
Cellular localization	Mitochondrion . Mitochondrion matrix, mitochondrion nucleoid .
Purification	The antibody was affinity-purified from rabbit antiserum by affinity-chromatography using epitope-specific immunogen.
Clonality	Polyclonal
Concentration	1 mg/ml
Observed band	22kd
Human Gene ID	7019
Human Swiss-Prot Number	Q00059
Alternative Names	TFAM; TCF6; TCF6L2; Transcription factor A; mitochondrial; mtTFA; Mitochondrial transcription factor 1; MtTF1; Transcription factor 6; TCF-6; Transcription factor 6-like 2
Background	This gene encodes a key mitochondrial transcription factor containing two high mobility group motifs.



The encoded protein also functions in mitochondrial DNA replication and repair. Sequence polymorphisms in this gene are associated with Alzheimer's and Parkinson's diseases. There are pseudogenes for this gene on chromosomes 6, 7, and 11. Alternative splicing results in multiple transcript variants. [provided by RefSeq, Aug 2012],

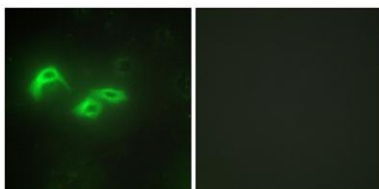


Immunofluorescence analysis of HeLa cell. 1, mtTFA Polyclonal Antibody (Green) was diluted at 1:200 (4° overnight). Histone H3 (Tri Methyl Lys36) Monoclonal Antibody (Q12) (Red) was diluted at 1:200 (4° overnight). 2, Goat Anti Rabbit Alexa Fluor 594 Catalog: R



Western blot analysis of 293T 3T3 lysis using mtTFA antibody. Antibody was diluted at 1:500

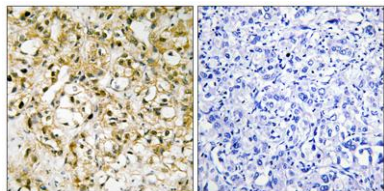
Immunofluorescence analysis of HepG2 cells, using TFAM Antibody. The picture on the right is blocked with the synthesized peptide.





ELK Biotechnology

Immunohistochemistry analysis of paraffin-embedded human liver carcinoma tissue, using TFAM Antibody. The picture on the right is blocked with the synthesized peptide.



+86-27-59760950

ELKbio@ELKbiotech.com

www.elkbiotech.com

23-2, No.388 Gaoxin 2nd Road, Wuhan East Lake Hi-tech Development Zone, Hubei, P.R.C.