



TESK1 rabbit pAb

Cat No.:ES7374

For research use only

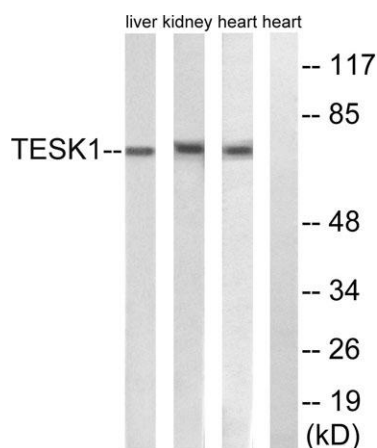
Overview

Product Name	TESK1 rabbit pAb
Host species	Rabbit
Applications	WB;ELISA
Species Cross-Reactivity	Human;Mouse;Rat
Recommended dilutions	Western Blot: 1/500 - 1/2000. ELISA: 1/40000. Not yet tested in other applications.
Immunogen	The antiserum was produced against synthesized peptide derived from human TESK1. AA range:181-230
Specificity	TESK1 Polyclonal Antibody detects endogenous levels of TESK1 protein.
Formulation	Liquid in PBS containing 50% glycerol, 0.5% BSA and 0.02% sodium azide.
Storage	Store at -20°C. Avoid repeated freeze-thaw cycles.
Protein Name	Dual specificity testis-specific protein kinase 1
Gene Name	TESK1
Cellular localization	Cytoplasm . Cytoplasm, perinuclear region . Cytoplasm, cytoskeleton, microtubule organizing center, centrosome . Cell projection, lamellipodium . Colocalizes with SPRY4 in vesicular spots in the cytoplasm (PubMed:15584898). Localized to F-actin-rich lamel
Purification	The antibody was affinity-purified from rabbit antiserum by affinity-chromatography using epitope-specific immunogen.
Clonality	Polyclonal
Concentration	1 mg/ml
Observed band	68kD
Human Gene ID	7016
Human Swiss-Prot Number	Q15569
Alternative Names	TESK1; Dual specificity testis-specific protein kinase 1; Testicular protein kinase 1
Background	testis-specific kinase 1(TESK1) Homo sapiens





This gene product is a serine/threonine protein kinase that contains an N-terminal protein kinase domain and a C-terminal proline-rich domain. Its protein kinase domain is most closely related to those of the LIM motif-containing protein kinases (LIMKs). The encoded protein can phosphorylate myelin basic protein and histone in vitro. The testicular germ cell-specific expression and developmental pattern of expression of the mouse gene suggests that this gene plays an important role at and after the meiotic phase of spermatogenesis. Alternative splicing results in multiple transcript variants encoding different isoforms. [provided by RefSeq, Dec 2015],



Western blot analysis of lysates from rat heart, rat kidney, and rat liver cells, using TESK1 Antibody. The lane on the right is blocked with the synthesized peptide.

