

# TRF1 (phospho Ser219) rabbit pAb

Cat No.:ES7369

For research use only

## Overview

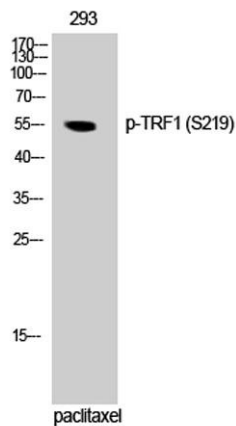
Product Name	TRF1 (phospho Ser219) rabbit pAb
Host species	Rabbit
Applications	WB;ELISA
Species Cross-Reactivity	Human;Mouse
Recommended dilutions	Western Blot: 1/500 - 1/2000. ELISA: 1/5000. Not yet tested in other applications.
Immunogen	The antiserum was produced against synthesized peptide derived from human Telomeric Repeat Binding Factor 1 around the phosphorylation site of Ser219. AA range:185-234
Specificity	Phospho-TRF1 (S219) Polyclonal Antibody detects endogenous levels of TRF1 protein only when phosphorylated at S219.
Formulation	Liquid in PBS containing 50% glycerol, 0.5% BSA and 0.02% sodium azide.
Storage	Store at -20°C. Avoid repeated freeze-thaw cycles.
Protein Name	Telomeric repeat-binding factor 1
Gene Name	TERF1
Cellular localization	Nucleus. Cytoplasm, cytoskeleton, spindle. Chromosome, telomere. Colocalizes with telomeric DNA in interphase and prophase cells. Telomeric localization decreases in metaphase, anaphase and telophase. Associates with the mitotic spindle.
Purification	The antibody was affinity-purified from rabbit antiserum by affinity-chromatography using epitope-specific immunogen.
Clonality	Polyclonal
Concentration	1 mg/ml
Observed band	55kD
Human Gene ID	7013
Human Swiss-Prot Number	P54274
Alternative Names	TERF1; PIN2; TRBF1; TRF; TRF1; Telomeric repeat-binding factor 1; NIMA-interacting protein 2;



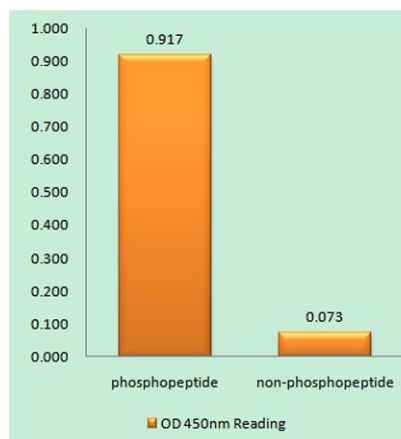
## Background

TTAGGG repeat-binding factor 1; Telomeric protein Pin2/TRF1

This gene encodes a telomere specific protein which is a component of the telomere nucleoprotein complex. This protein is present at telomeres throughout the cell cycle and functions as an inhibitor of telomerase, acting in cis to limit the elongation of individual chromosome ends. The protein structure contains a C-terminal Myb motif, a dimerization domain near its N-terminus and an acidic N-terminus. Two transcripts of this gene are alternatively spliced products. [provided by RefSeq, Jul 2008],



Western Blot analysis of 293 cells using Phospho-TRF1 (S219) Polyclonal Antibody cells nucleus extracted by Minute TM Cytoplasmic and Nuclear Fractionation kit (SC-003, Invent biotech, MN, USA).

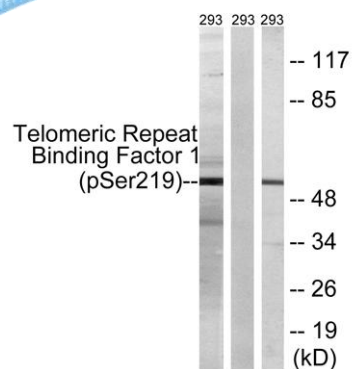


Enzyme-Linked Immunosorbent Assay (Phospho-ELISA) for Immunogen Phosphopeptide (Phospho-left) and Non-Phosphopeptide (Phospho-right), using Telomeric Repeat Binding Factor 1 (Phospho-Ser219) Antibody





**ELK Biotechnology**



Western blot analysis of lysates from 293 cells treated with paclitaxel 1uM 24h, using Telomeric Repeat Binding Factor 1 (Phospho-Ser219) Antibody. The lane on the right is blocked with the phospho peptide.



+86-27-59760950

ELKbio@ELKbiotech.com

[www.elkbiotech.com](http://www.elkbiotech.com)

23-2, No.388 Gaoxin 2nd Road,Wuhan East Lake Hi-tech Development Zone, Hubei , P.R.C