



Treacle rabbit pAb

Cat No.:ES7354

For research use only

Overview

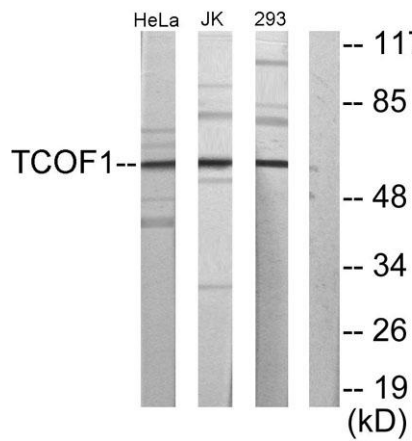
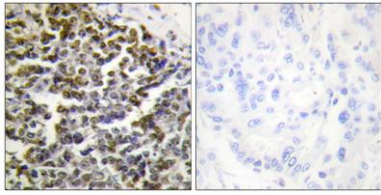
Product Name	Treacle rabbit pAb
Host species	Rabbit
Applications	WB;IHC;IF;ELISA
Species Cross-Reactivity	Human;Mouse
Recommended dilutions	Western Blot: 1/500 - 1/2000. Immunohistochemistry: 1/100 - 1/300. Immunofluorescence: 1/200 - 1/1000. ELISA: 1/10000. Not yet tested in other applications.
Immunogen	The antiserum was produced against synthesized peptide derived from human TCOF1. AA range:41-90
Specificity	Treacle Polyclonal Antibody detects endogenous levels of Treacle protein.
Formulation	Liquid in PBS containing 50% glycerol, 0.5% BSA and 0.02% sodium azide.
Storage	Store at -20°C. Avoid repeated freeze-thaw cycles.
Protein Name	Treacle protein
Gene Name	TCOF1
Cellular localization	Nucleus, nucleolus .
Purification	The antibody was affinity-purified from rabbit antiserum by affinity-chromatography using epitope-specific immunogen.
Clonality	Polyclonal
Concentration	1 mg/ml
Observed band	152kD
Human Gene ID	6949
Human Swiss-Prot Number	Q13428
Alternative Names	TCOF1; Treacle protein; Treacher Collins syndrome protein
Background	This gene encodes a nucleolar protein with a LIS1 homology domain. The protein is involved in ribosomal DNA gene transcription through its interaction with upstream binding factor (UBF). Mutations in this gene have been associated with





Treacher Collins syndrome, a disorder which includes abnormal craniofacial development. Multiple transcript variants encoding different isoforms have been found for this gene. [provided by RefSeq, Sep 2008],

Immunohistochemistry analysis of paraffin-embedded human lung carcinoma tissue, using TCOF1 Antibody. The picture on the right is blocked with the synthesized peptide.



Western blot analysis of lysates from Jurkat, 293, HeLa cells, using TCOF1 Antibody. The lane on the right is blocked with the synthesized peptide.

