



# SSTR4 rabbit pAb

Cat No.:ES7292

For research use only

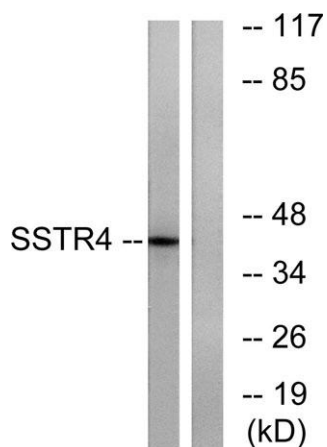
## Overview

<b>Product Name</b>	SSTR4 rabbit pAb
<b>Host species</b>	Rabbit
<b>Applications</b>	WB;ELISA
<b>Species Cross-Reactivity</b>	Human;Mouse;Rat
<b>Recommended dilutions</b>	Western Blot: 1/500 - 1/2000. ELISA: 1/20000. Not yet tested in other applications.
<b>Immunogen</b>	The antiserum was produced against synthesized peptide derived from human SSTR4. AA range:155-204
<b>Specificity</b>	SSTR4 Polyclonal Antibody detects endogenous levels of SSTR4 protein.
<b>Formulation</b>	Liquid in PBS containing 50% glycerol, 0.5% BSA and 0.02% sodium azide.
<b>Storage</b>	Store at -20°C. Avoid repeated freeze-thaw cycles.
<b>Protein Name</b>	Somatostatin receptor type 4
<b>Gene Name</b>	SSTR4
<b>Cellular localization</b>	Cell membrane; Multi-pass membrane protein.
<b>Purification</b>	The antibody was affinity-purified from rabbit antiserum by affinity-chromatography using epitope-specific immunogen.
<b>Clonality</b>	Polyclonal
<b>Concentration</b>	1 mg/ml
<b>Observed band</b>	42kD
<b>Human Gene ID</b>	6754
<b>Human Swiss-Prot Number</b>	P31391
<b>Alternative Names</b>	SSTR4; Somatostatin receptor type 4; SS-4-R; SS4-R; SS4R
<b>Background</b>	Somatostatin acts at many sites to inhibit the release of many hormones and other secretory proteins. The biologic effects of somatostatin are probably mediated by a family of G protein-coupled receptors that are expressed in a tissue-specific manner. SSTR4 is a member of the superfamily of

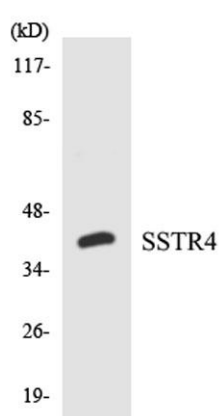




receptors having seven transmembrane segments and is expressed in highest levels in fetal and adult brain and lung. [provided by RefSeq, Jul 2008],



Western blot analysis of lysates from LOVO cells, using SSTR4 Antibody. The lane on the right is blocked with the synthesized peptide.



Western blot analysis of the lysates from HepG2 cells using SSTR4 antibody.

