



SRPK1 rabbit pAb

Cat No.:ES7285

For research use only

Overview

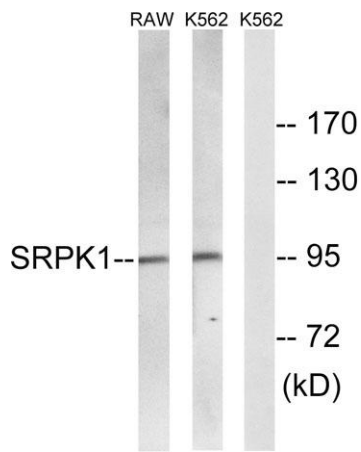
Product Name	SRPK1 rabbit pAb
Host species	Rabbit
Applications	WB;ELISA
Species Cross-Reactivity	Human;Mouse;Rat
Recommended dilutions	Western Blot: 1/500 - 1/2000. ELISA: 1/40000. Not yet tested in other applications.
Immunogen	The antiserum was produced against synthesized peptide derived from human SRPK1. AA range:521-570
Specificity	SRPK1 Polyclonal Antibody detects endogenous levels of SRPK1 protein.
Formulation	Liquid in PBS containing 50% glycerol, 0.5% BSA and 0.02% sodium azide.
Storage	Store at -20°C. Avoid repeated freeze-thaw cycles.
Protein Name	SRSF protein kinase 1
Gene Name	SRPK1
Cellular localization	[Isoform 2]: Cytoplasm. Nucleus. Nucleus matrix. Microsome. Shuttles between the nucleus and the cytoplasm. Inhibition of the Hsp90 ATPase activity, osmotic stress and interaction with HHV-1 ICP27 protein can induce its translocation to the nucleus. KAT5/
Purification	The antibody was affinity-purified from rabbit antiserum by affinity-chromatography using epitope-specific immunogen.
Clonality	Polyclonal
Concentration	1 mg/ml
Observed band	95kD
Human Gene ID	6732
Human Swiss-Prot Number	Q96SB4
Alternative Names	SRPK1; SRSF protein kinase 1; SFRS protein kinase 1; Serine/arginine-rich protein-specific kinase 1; SR-protein-specific kinase 1



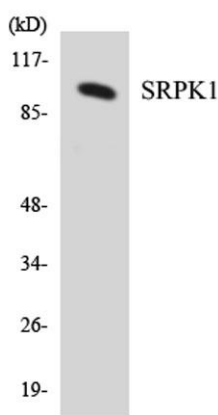


Background

This gene encodes a serine/arginine protein kinase specific for the SR (serine/arginine-rich domain) family of splicing factors. The protein localizes to the nucleus and the cytoplasm. It is thought to play a role in regulation of both constitutive and alternative splicing by regulating intracellular localization of splicing factors. Alternative splicing of this gene results in multiple transcript variants. Additional alternatively spliced transcript variants have been described for this gene, but their full length nature have not been determined.[provided by RefSeq, Jul 2010],



Western blot analysis of lysates from K562 and RAW264.7 cells, using SRPK1 Antibody. The lane on the right is blocked with the synthesized peptide.



Western blot analysis of the lysates from HUVEC cells using SRPK1 antibody.

