



POLR3D rabbit pAb

Cat No.:ES7244

For research use only

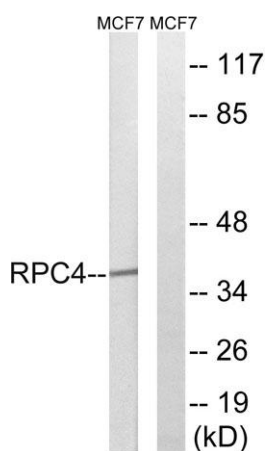
Overview

Product Name	POLR3D rabbit pAb
Host species	Rabbit
Applications	WB;ELISA;IHC
Species Cross-Reactivity	Human;Mouse
Recommended dilutions	WB 1:500-2000;IHC-p 1:50-300; ELISA 2000-20000
Immunogen	The antiserum was produced against synthesized peptide derived from human RPC4. AA range:281-330
Specificity	POLR3D Polyclonal Antibody detects endogenous levels of POLR3D protein.
Formulation	Liquid in PBS containing 50% glycerol, 0.5% BSA and 0.02% sodium azide.
Storage	Store at -20°C. Avoid repeated freeze-thaw cycles.
Protein Name	DNA-directed RNA polymerase III subunit RPC4
Gene Name	POLR3D
Cellular localization	Nucleus.
Purification	The antibody was affinity-purified from rabbit antiserum by affinity-chromatography using epitope-specific immunogen.
Clonality	Polyclonal
Concentration	1 mg/ml
Observed band	38kD
Human Gene ID	661
Human Swiss-Prot Number	P05423
Alternative Names	POLR3D; BN51; BN51T; DNA-directed RNA polymerase III subunit RPC4; RNA polymerase III subunit C4; DNA-directed RNA polymerase III subunit D; Protein BN51; RNA polymerase III 47 kDa subunit; RPC53 homolog
Background	This gene complements a temperature-sensitive mutant isolated from the BHK-21 Syrian hamster cell line. It leads to a block in progression through the G1 phase of the cell cycle at nonpermissive

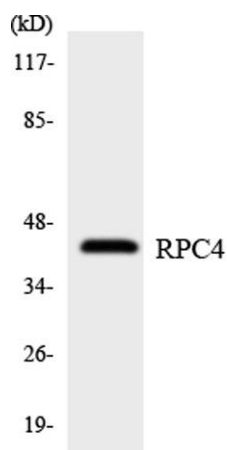




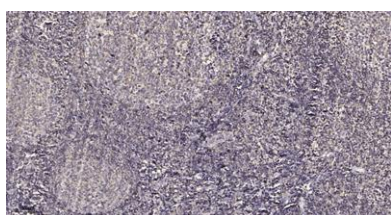
temperatures. [provided by RefSeq, Jul 2008],



Western blot analysis of lysates from MCF-7 cells, using RPC4 Antibody. The lane on the right is blocked with the synthesized peptide.



Western blot analysis of the lysates from HepG2 cells using RPC4 antibody.



Immunohistochemical analysis of paraffin-embedded human tonsil. 1, Antibody was diluted at 1:200(4° overnight). 2, Tris-EDTA,pH9.0 was used for antigen retrieval. 3,Secondary antibody was diluted at 1:200(room temperature, 45min).

