



PEPT1 rabbit pAb

Cat No.:ES7233

For research use only

Overview

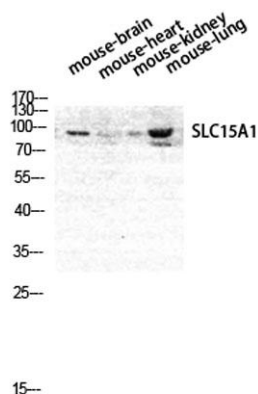
Product Name	PEPT1 rabbit pAb
Host species	Rabbit
Applications	WB;ELISA;IHC
Species Cross-Reactivity	Human;Mouse;Rat
Recommended dilutions	WB 1:500-2000;IHC-p 1:50-300; ELISA 2000-20000
Immunogen	The antiserum was produced against synthesized peptide derived from human SLC15A1. AA range:225-274
Specificity	PEPT1 Polyclonal Antibody detects endogenous levels of PEPT1 protein.
Formulation	Liquid in PBS containing 50% glycerol, 0.5% BSA and 0.02% sodium azide.
Storage	Store at -20°C. Avoid repeated freeze-thaw cycles.
Protein Name	Solute carrier family 15 member 1
Gene Name	SLC15A1
Cellular localization	Membrane ; Multi-pass membrane protein .
Purification	The antibody was affinity-purified from rabbit antiserum by affinity-chromatography using epitope-specific immunogen.
Clonality	Polyclonal
Concentration	1 mg/ml
Observed band	37kD
Human Gene ID	6564
Human Swiss-Prot Number	P46059
Alternative Names	SLC15A1; PEPT1; Solute carrier family 15 member 1; Intestinal H(+)/peptide cotransporter; Oligopeptide transporter; small intestine isoform; Peptide transporter 1
Background	This gene encodes an intestinal hydrogen peptide cotransporter that is a member of the solute carrier family 15. The encoded protein is localized to the brush border membrane of the intestinal epithelium and mediates the uptake of di- and tripeptides from



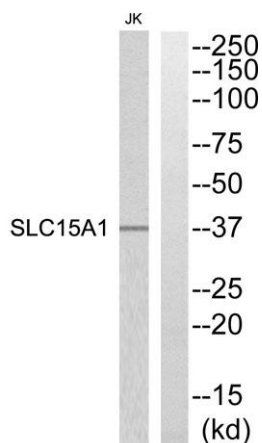


the lumen into the enterocytes. This protein plays an important role in the uptake and digestion of dietary proteins. This protein also facilitates the absorption of numerous peptidomimetic drugs. [provided by RefSeq, Apr 2010],

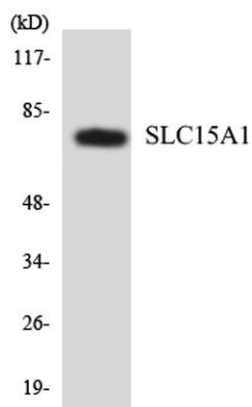
Western Blot analysis of MOUSE-BRAIN MOUSE-HEART
MOUSE-LUNG MOUSE-KIDNEY cells using PEPT1
Polyclonal Antibody diluted at 1:1000



Western blot analysis of SLC15A1 Antibody. The lane on the right is blocked with the SLC15A1 peptide.

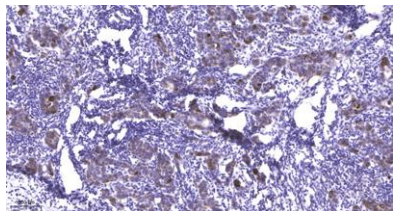


Western blot analysis of the lysates from HeLa cells using SLC15A1 antibody.





ELK Biotechnology



Immunohistochemical analysis of paraffin-embedded human Breast cancer. 1, Antibody was diluted at 1:200(4° overnight). 2, Tris-EDTA,pH9.0 was used for antigen retrieval. 3,Secondary antibody was diluted at 1:200(room temperature, 45min).



+86-27-59760950

ELKbio@ELKbiotech.com

www.elkbiotech.com

23-2, No.388 Gaoxin 2nd Road,Wuhan East Lake Hi-tech Development Zone, Hubei , P.R.C