



NBK (phospho Thr33) rabbit pAb

Cat No.:ES7132

For research use only

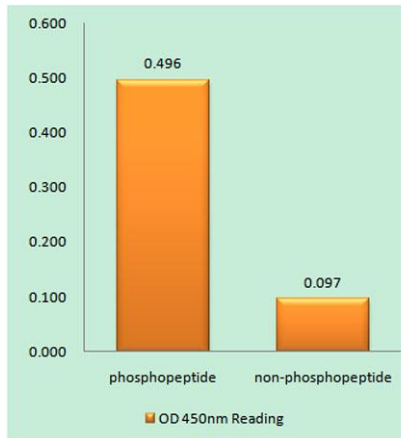
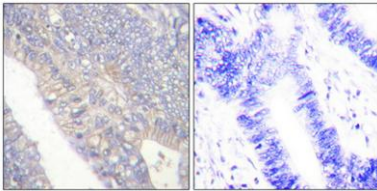
Overview

| | |
|---------------------------------|---|
| Product Name | NBK (phospho Thr33) rabbit pAb |
| Host species | Rabbit |
| Applications | WB;IHC;IF;ELISA |
| Species Cross-Reactivity | Human;Rat;Mouse; |
| Recommended dilutions | Western Blot: 1/500 - 1/2000. Immunohistochemistry: 1/100 - 1/300. ELISA: 1/10000. Not yet tested in other applications. |
| Immunogen | The antiserum was produced against synthesized peptide derived from human BIK around the phosphorylation site of Thr33. AA range:18-67 |
| Specificity | Phospho-NBK (T33) Polyclonal Antibody detects endogenous levels of NBK protein only when phosphorylated at T33. |
| Formulation | Liquid in PBS containing 50% glycerol, 0.5% BSA and 0.02% sodium azide. |
| Storage | Store at -20°C. Avoid repeated freeze-thaw cycles. |
| Protein Name | Bcl-2-interacting killer |
| Gene Name | BIK |
| Cellular localization | Endomembrane system; Single-pass membrane protein. Mitochondrion membrane ; Single-pass membrane protein . Around the nuclear envelope, and in cytoplasmic membranes. |
| Purification | The antibody was affinity-purified from rabbit antiserum by affinity-chromatography using epitope-specific immunogen. |
| Clonality | Polyclonal |
| Concentration | 1 mg/ml |
| Observed band | 30kD |
| Human Gene ID | 638 |
| Human Swiss-Prot Number | Q13323 |
| Alternative Names | BIK; NBK; Bcl-2-interacting killer; Apoptosis inducer NBK; BIP1; BP4 |
| Background | The protein encoded by this gene shares a critical |



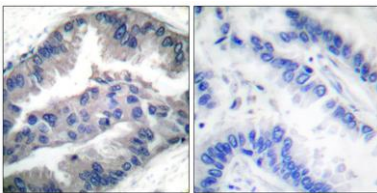
BH3 domain with other death-promoting proteins, such as BID, BAK, BAD and BAX, that is required for its pro-apoptotic activity, and for interaction with anti-apoptotic members of the BCL2 family, and viral survival-promoting proteins. Since the activity of this protein is suppressed in the presence of survival-promoting proteins, it is suggested as a likely target for anti-apoptotic proteins. [provided by RefSeq, Sep 2011],

Immunohistochemical analysis of paraffin-embedded Human colon cancer. Antibody was diluted at 1:100(4° overnight). High-pressure and temperature Tris-EDTA,pH8.0 was used for antigen retrieval. Negative contrl (right) obtained from antibody was pre-absorb



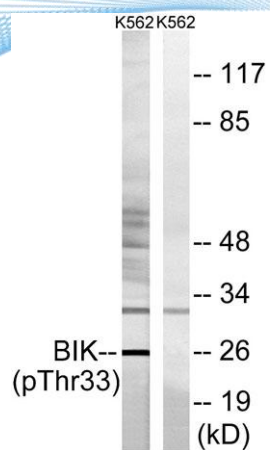
Enzyme-Linked Immunosorbent Assay (Phospho-ELISA) for Immunogen Phosphopeptide (Phospho-left) and Non-Phosphopeptide (Phospho-right), using BIK (Phospho-Thr33) Antibody

Immunohistochemistry analysis of paraffin-embedded human lung carcinoma, using BIK (Phospho-Thr33) Antibody. The picture on the right is blocked with the phospho peptide.





ELK Biotechnology



Western blot analysis of lysates from K562 cells, using BIK (Phospho-Thr33) Antibody. The lane on the right is blocked with the phospho peptide.



+86-27-59760950

ELKbio@ELKbiotech.com

www.elkbiotech.com

23-2, No.388 Gaoxin 2nd Road, Wuhan East Lake Hi-tech Development Zone, Hubei, P.R.C