



Cleaved-Factor B Bb (K260) rabbit pAb

Cat No.:ES7117

For research use only

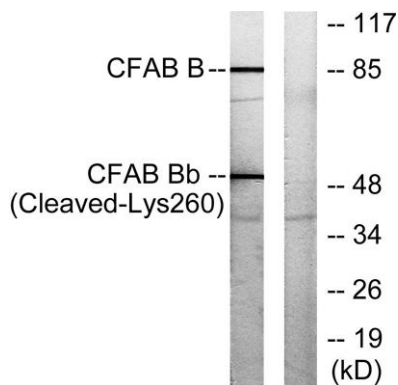
Overview

Product Name	Cleaved-Factor B Bb (K260) rabbit pAb
Host species	Rabbit
Applications	WB;ELISA
Species Cross-Reactivity	Human;Mouse
Recommended dilutions	Western Blot: 1/500 - 1/2000. ELISA: 1/20000. Not yet tested in other applications.
Immunogen	The antiserum was produced against synthesized peptide derived from human CFAB Bb. AA range:241-290
Specificity	Cleaved-Factor B Bb (K260) Polyclonal Antibody detects endogenous levels of fragment of activated Factor B Bb protein resulting from cleavage adjacent to K260.
Formulation	Liquid in PBS containing 50% glycerol, 0.5% BSA and 0.02% sodium azide.
Storage	Store at -20°C. Avoid repeated freeze-thaw cycles.
Protein Name	Complement factor B
Gene Name	CFB
Cellular localization	Secreted.
Purification	The antibody was affinity-purified from rabbit antiserum by affinity-chromatography using epitope-specific immunogen.
Clonality	Polyclonal
Concentration	1 mg/ml
Observed band	57+85kD
Human Gene ID	629
Human Swiss-Prot Number	P00751
Alternative Names	CFB; BF; BFD; Complement factor B; C3/C5 convertase; Glycine-rich beta glycoprotein; GBG; PBF2; Properdin factor B
Background	This gene encodes complement factor B, a component of the alternative pathway of complement activation. Factor B circulates in the





blood as a single chain polypeptide. Upon activation of the alternative pathway, it is cleaved by complement factor D yielding the noncatalytic chain Ba and the catalytic subunit Bb. The active subunit Bb is a serine protease which associates with C3b to form the alternative pathway C3 convertase. Bb is involved in the proliferation of preactivated B lymphocytes, while Ba inhibits their proliferation. This gene localizes to the major histocompatibility complex (MHC) class III region on chromosome 6. This cluster includes several genes involved in regulation of the immune reaction. Polymorphisms in this gene are associated with a reduced risk of age-related macular degeneration. The polyadenylation site of this gene is 421 bp from the 5' end of the gene for complemen



Western blot analysis of lysates from K562 cells, treated with etoposide 25uM 1h, using CFAB Bb (Cleaved-Lys260) Antibody. The lane on the right is blocked with the synthesized peptide.

