



# RGS16 (phospho Tyr168) rabbit pAb

Cat No.:ES7044

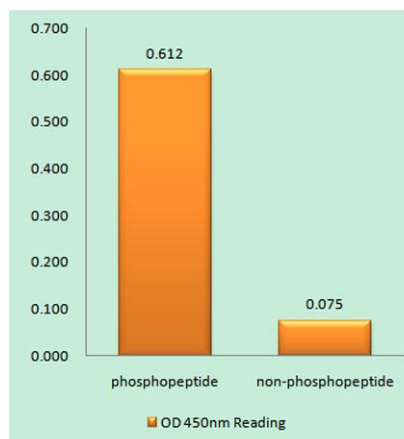
For research use only

## Overview

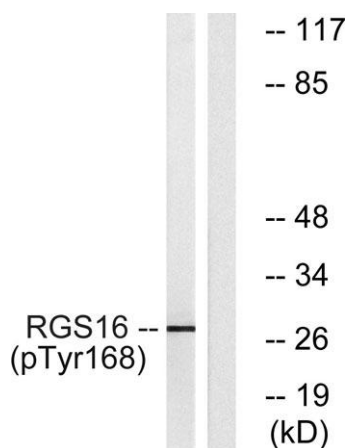
Product Name	RGS16 (phospho Tyr168) rabbit pAb
Host species	Rabbit
Applications	WB;ELISA;IHC
Species Cross-Reactivity	Human;Mouse;Rat;Monkey
Recommended dilutions	WB 1:500-2000;IHC-p 1:50-300; ELISA 2000-20000
Immunogen	The antiserum was produced against synthesized peptide derived from human RGS16 around the phosphorylation site of Tyr168. AA range:141-190
Specificity	Phospho-RGS16 (Y168) Polyclonal Antibody detects endogenous levels of RGS16 protein only when phosphorylated at Y168.
Formulation	Liquid in PBS containing 50% glycerol, 0.5% BSA and 0.02% sodium azide.
Storage	Store at -20°C. Avoid repeated freeze-thaw cycles.
Protein Name	Regulator of G-protein signaling 16
Gene Name	RGS16
Cellular localization	Membrane ; Lipid-anchor .
Purification	The antibody was affinity-purified from rabbit antiserum by affinity-chromatography using epitope-specific immunogen.
Clonality	Polyclonal
Concentration	1 mg/ml
Observed band	30kD
Human Gene ID	6004
Human Swiss-Prot Number	O15492
Alternative Names	RGS16; RGSR; Regulator of G-protein signaling 16; RGS16; A28-RGS14P; Retinal-specific RGS; RGS-r; hRGS-r; Retinally abundant regulator of G-protein signaling
Background	The protein encoded by this gene belongs to the 'regulator of G protein signaling' family. It inhibits signal transduction by increasing the GTPase activity of G protein alpha subunits. It also may play a role in



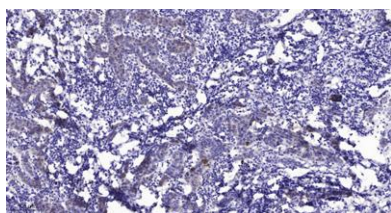
regulating the kinetics of signaling in the phototransduction cascade. [provided by RefSeq, Jul 2008],



Enzyme-Linked Immunosorbent Assay (Phospho-ELISA) for Immunogen Phosphopeptide (Phospho-left) and Non-Phosphopeptide (Phospho-right), using RGS16 (Phospho-Tyr168) Antibody



Western blot analysis of lysates from COS7 cells treated with heat shock, using RGS16 (Phospho-Tyr168) Antibody. The lane on the right is blocked with the phospho peptide.



Immunohistochemical analysis of paraffin-embedded human Breast cancer. 1, Antibody was diluted at 1:200(4° overnight). 2, Tris-EDTA,pH9.0 was used for antigen retrieval. 3,Secondary antibody was diluted at 1:200(room temperature, 45min).

