



UROC28 rabbit pAb

Cat No.:ES7016

For research use only

Overview

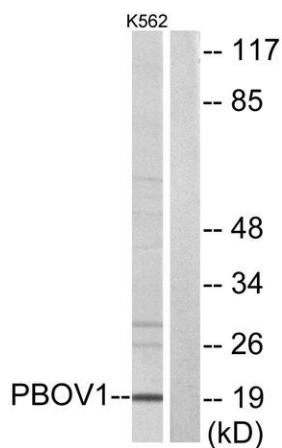
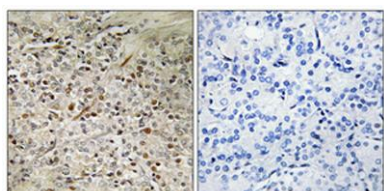
Product Name	UROC28 rabbit pAb
Host species	Rabbit
Applications	WB;IHC;IF;ELISA
Species Cross-Reactivity	Human;Rat;Mouse;
Recommended dilutions	Western Blot: 1/500 - 1/2000. Immunohistochemistry: 1/100 - 1/300. Immunofluorescence: 1/200 - 1/1000. ELISA: 1/40000. Not yet tested in other applications.
Immunogen	The antiserum was produced against synthesized peptide derived from human PBOV1. AA range:31-80
Specificity	UROC28 Polyclonal Antibody detects endogenous levels of UROC28 protein.
Formulation	Liquid in PBS containing 50% glycerol, 0.5% BSA and 0.02% sodium azide.
Storage	Store at -20°C. Avoid repeated freeze-thaw cycles.
Protein Name	Prostate and breast cancer overexpressed gene 1 protein
Gene Name	PBOV1
Cellular localization	Cytoplasm . Nucleus .
Purification	The antibody was affinity-purified from rabbit antiserum by affinity-chromatography using epitope-specific immunogen.
Clonality	Polyclonal
Concentration	1 mg/ml
Observed band	19kD
Human Gene ID	59351
Human Swiss-Prot Number	Q9GZY1
Alternative Names	PBOV1; UROC28; Prostate and breast cancer overexpressed gene 1 protein; Protein UROC28; UC28
Background	This intronless gene encodes a protein of unknown function. Its expression is up-regulated in some





types of cancer, including prostate, breast, and bladder cancer. [provided by RefSeq, Aug 2011],

Immunohistochemical analysis of paraffin-embedded Human prostate cancer. Antibody was diluted at 1:100(4° overnight). High-pressure and temperature Tris-EDTA,pH8.0 was used for antigen retrieval. Negative contrl (right) obtained from antibody was pre-abs



Western blot analysis of lysates from K562 cells, using PBOV1 Antibody. The lane on the right is blocked with the synthesized peptide.

