



Zhangfei rabbit pAb

Cat No.:ES6960

For research use only

Overview

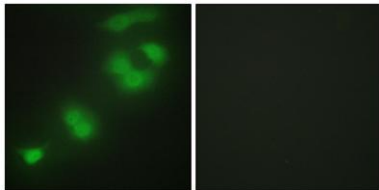
Product Name	Zhangfei rabbit pAb
Host species	Rabbit
Applications	WB;IHC;IF;ELISA
Species Cross-Reactivity	Human;Mouse
Recommended dilutions	Western Blot: 1/500 - 1/2000. Immunohistochemistry: 1/100 - 1/300. Immunofluorescence: 1/200 - 1/1000. ELISA: 1/10000. Not yet tested in other applications.
Immunogen	The antiserum was produced against synthesized peptide derived from human CREBZF. AA range:221-270
Specificity	Zhangfei Polyclonal Antibody detects endogenous levels of Zhangfei protein.
Formulation	Liquid in PBS containing 50% glycerol, 0.5% BSA and 0.02% sodium azide.
Storage	Store at -20°C. Avoid repeated freeze-thaw cycles.
Protein Name	CREB/ATF bZIP transcription factor
Gene Name	CREBZF
Cellular localization	Nucleus . Colocalizes in promyelocytic leukemia protein nuclear bodies (PML-NB) with CREB3 and HCFC1.
Purification	The antibody was affinity-purified from rabbit antiserum by affinity-chromatography using epitope-specific immunogen.
Clonality	Polyclonal
Concentration	1 mg/ml
Observed band	26kD
Human Gene ID	58487
Human Swiss-Prot Number	Q9NS37
Alternative Names	CREBZF; ZF; CREB/ATF bZIP transcription factor; Host cell factor-binding transcription factor Zhangfei; HCF-binding transcription factor Zhangfei function:Strongly activates transcription when
Background	

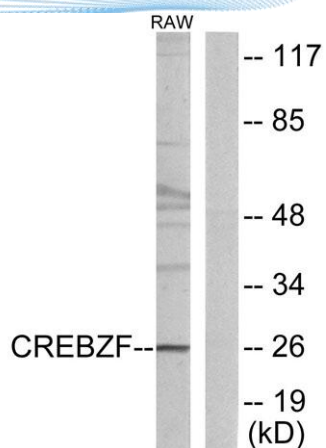




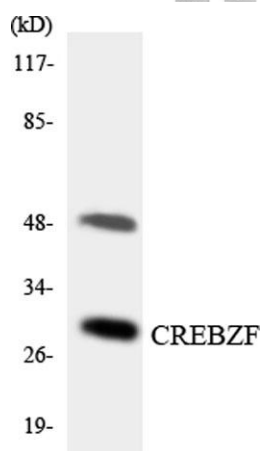
bound to HCFC1. Suppresses the expression of HSV proteins in cells infected with the virus in a HCFC1-dependent manner. Also suppresses the HCFC1-dependent transcriptional activation by CREB3 and reduces the amount of CREB3 in the cell. Able to down-regulate expression of some cellular genes in CREBZF-expressing cells.,miscellaneous:Named Zhangfei after a legendary Chinese warrior who was contemporary with Luman in around 220 AD.,similarity:Belongs to the bZIP family. ATF subfamily.,similarity:Contains 1 bZIP domain.,subcellular location:Colocalizes at punctate nuclear structures with CREB3 and HCFC1.,subunit:Interacts with HCFC1, causing suppression of CREB3 transcriptional activity.,tissue specificity:In adults, expressed most abundantly in heart, liver and skeletal muscle, moderately abundant in kidney and pancreas, and barely detectable in lungs. In fetal tissues, expressed most abundantly in kidney and very low amounts in heart, lung and liver.,

Immunofluorescence analysis of HepG2 cells, using CREBZF Antibody. The picture on the right is blocked with the synthesized peptide.

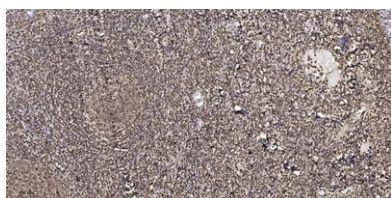




Western blot analysis of lysates from RAW264.7 cells, using CREBZF Antibody. The lane on the right is blocked with the synthesized peptide.



Western blot analysis of the lysates from COLO205 cells using CREBZF antibody.



Immunohistochemical analysis of paraffin-embedded human tonsil. 1, Tris-EDTA, pH 9.0 was used for antigen retrieval. 2 Antibody was diluted at 1:200 (4° overnight). 3, Secondary antibody was diluted at 1:200 (room temperature, 45 min).

