



IGSF4B rabbit pAb

Cat No.:ES6940

For research use only

Overview

Product Name	IGSF4B rabbit pAb
Host species	Rabbit
Applications	WB;IHC;IF;ELISA
Species Cross-Reactivity	Human;Mouse;Rat
Recommended dilutions	Western Blot: 1/500 - 1/2000. Immunohistochemistry: 1/100 - 1/300. Immunofluorescence: 1/200 - 1/1000. ELISA: 1/5000. Not yet tested in other applications.
Immunogen	The antiserum was produced against synthesized peptide derived from human CADM3. AA range:141-190
Specificity	IGSF4B Polyclonal Antibody detects endogenous levels of IGSF4B protein.
Formulation	Liquid in PBS containing 50% glycerol, 0.5% BSA and 0.02% sodium azide.
Storage	Store at -20°C. Avoid repeated freeze-thaw cycles.
Protein Name	Cell adhesion molecule 3
Gene Name	CADM3
Cellular localization	Cell membrane ; Single-pass type I membrane protein . Cell junction .
Purification	The antibody was affinity-purified from rabbit antiserum by affinity-chromatography using epitope-specific immunogen.
Clonality	Polyclonal
Concentration	1 mg/ml
Observed band	43kD
Human Gene ID	57863
Human Swiss-Prot Number	Q8N126
Alternative Names	CADM3; IGSF4B; NECL1; SYNCAM3; TSL1; Cell adhesion molecule 3; Brain immunoglobulin receptor; Immunoglobulin superfamily member 4B; IgSF4B; Nectin-like protein 1; NECL-1; Synaptic cell adhesion molecule 3; SynCAM3; TSLC1-like protein

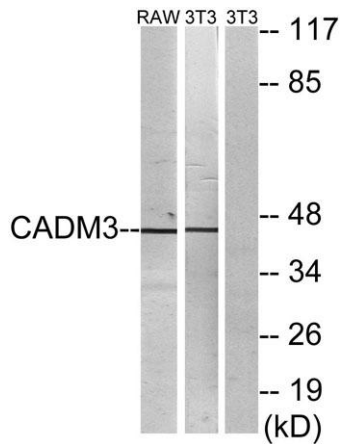
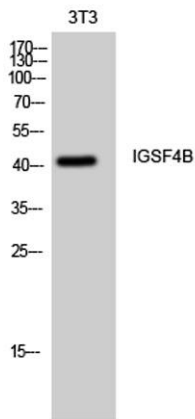




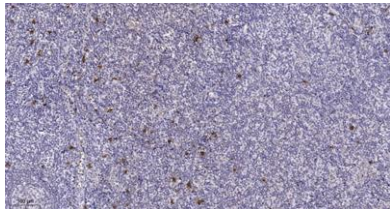
Background

1; TS
cell adhesion molecule 3(CADM3) Homo sapiens
IGSF4B is a brain-specific protein related to the
calcium-independent cell-cell adhesion molecules
known as nectins (see PVRL3; MIM 607147)
(Kakunaga et al., 2005 [PubMed
15741237]).[supplied by OMIM, Mar 2008],

Western Blot analysis of 3T3 cells using IGSF4B Polyclonal
Antibody



Western blot analysis of lysates from NIH/3T3 and
RAW264.7 cells, using CADM3 Antibody. The lane on the
right is blocked with the synthesized peptide.



Immunohistochemical analysis of paraffin-embedded
human tonsil. 1, Tris-EDTA,pH9.0 was used for antigen
retrieval. 2 Antibody was diluted at 1:200(4°
overnight.3,Secondary antibody was diluted at
1:200(room temperature, 45min).

