

# UBPH rabbit pAb

Cat No.:ES6829

For research use only

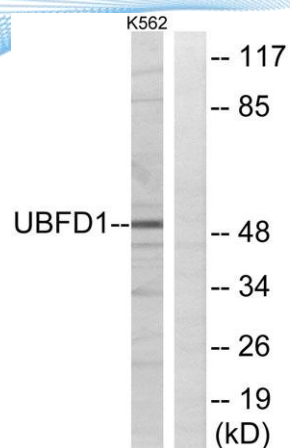
## Overview

|                          |                                                                                                                                                                                                                                    |
|--------------------------|------------------------------------------------------------------------------------------------------------------------------------------------------------------------------------------------------------------------------------|
| Product Name             | UBPH rabbit pAb                                                                                                                                                                                                                    |
| Host species             | Rabbit                                                                                                                                                                                                                             |
| Applications             | WB;ELISA                                                                                                                                                                                                                           |
| Species Cross-Reactivity | Human;Mouse;Rat                                                                                                                                                                                                                    |
| Recommended dilutions    | Western Blot: 1/500 - 1/2000. ELISA: 1/10000. Not yet tested in other applications.                                                                                                                                                |
| Immunogen                | The antiserum was produced against synthesized peptide derived from human UBFD1. AA range:135-184                                                                                                                                  |
| Specificity              | UBPH Polyclonal Antibody detects endogenous levels of UBPH protein.                                                                                                                                                                |
| Formulation              | Liquid in PBS containing 50% glycerol, 0.5% BSA and 0.02% sodium azide.                                                                                                                                                            |
| Storage                  | Store at -20°C. Avoid repeated freeze-thaw cycles.                                                                                                                                                                                 |
| Protein Name             | Ubiquitin domain-containing protein UBFD1                                                                                                                                                                                          |
| Gene Name                | UBFD1                                                                                                                                                                                                                              |
| Cellular localization    | cell-cell adherens junction,                                                                                                                                                                                                       |
| Purification             | The antibody was affinity-purified from rabbit antiserum by affinity-chromatography using epitope-specific immunogen.                                                                                                              |
| Clonality                | Polyclonal                                                                                                                                                                                                                         |
| Concentration            | 1 mg/ml                                                                                                                                                                                                                            |
| Observed band            | 50kD                                                                                                                                                                                                                               |
| Human Gene ID            | 56061                                                                                                                                                                                                                              |
| Human Swiss-Prot Number  | O14562                                                                                                                                                                                                                             |
| Alternative Names        | UBFD1; UBPH; Ubiquitin domain-containing protein UBFD1; Ubiquitin-binding protein homolog UBFD1 (Ubiquitin Family Domain Containing 1) is a Protein Coding gene. GO annotations related to this gene include poly (A) RNA binding. |
| Background               |                                                                                                                                                                                                                                    |

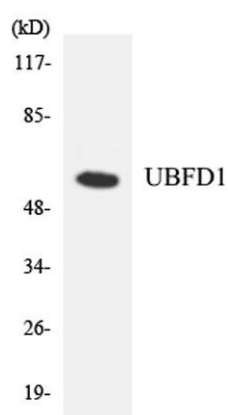




**ELK Biotechnology**



Western blot analysis of lysates from K562 cells, using UBFD1 Antibody. The lane on the right is blocked with the synthesized peptide.



Western blot analysis of the lysates from COLO205 cells using UBFD1 antibody.



+86-27-59760950

[ELKbio@ELKbiotech.com](mailto:ELKbio@ELKbiotech.com)

[www.elkbiotech.com](http://www.elkbiotech.com)

23-2, No.388 Gaoxin 2nd Road,Wuhan East Lake Hi-tech Development Zone, Hubei , P.R.C