

CD172g rabbit pAb

Cat No.:ES6727

For research use only

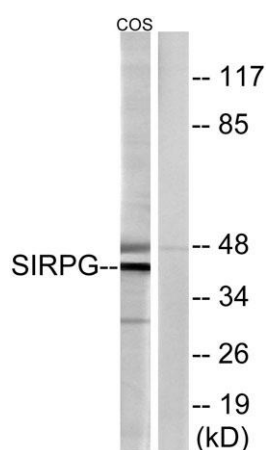
Overview

Product Name	CD172g rabbit pAb
Host species	Rabbit
Applications	WB;ELISA
Species Cross-Reactivity	Human;Monkey
Recommended dilutions	Western Blot: 1/500 - 1/2000. ELISA: 1/10000. Not yet tested in other applications.
Immunogen	The antiserum was produced against synthesized peptide derived from human SIRPG. AA range:101-150
Specificity	CD172g Polyclonal Antibody detects endogenous levels of CD172g protein.
Formulation	Liquid in PBS containing 50% glycerol, 0.5% BSA and 0.02% sodium azide.
Storage	Store at -20°C. Avoid repeated freeze-thaw cycles.
Protein Name	Signal-regulatory protein gamma
Gene Name	SIRPG
Cellular localization	Membrane ; Single-pass type I membrane protein .
Purification	The antibody was affinity-purified from rabbit antiserum by affinity-chromatography using epitope-specific immunogen.
Clonality	Polyclonal
Concentration	1 mg/ml
Observed band	42kD
Human Gene ID	55423
Human Swiss-Prot Number	Q9P1W8
Alternative Names	SIRPG; SIRPB2; Signal-regulatory protein gamma; SIRP-gamma; CD172 antigen-like family member B; Signal-regulatory protein beta-2; SIRP-b2; SIRP-beta-2; CD antigen CD172g
Background	The protein encoded by this gene is a member of the signal-regulatory protein (SIRP) family, and also belongs to the immunoglobulin superfamily. SIRP family members are receptor-type transmembrane

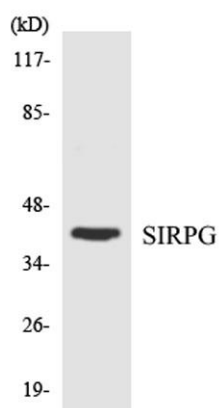




glycoproteins known to be involved in the negative regulation of receptor tyrosine kinase-coupled signaling processes. Alternatively spliced transcript variants encoding different isoforms have been described. [provided by RefSeq, Jul 2008],



Western blot analysis of lysates from COS cells, using SIRPG Antibody. The lane on the right is blocked with the synthesized peptide.



Western blot analysis of the lysates from RAW264.7 cells using SIRPG antibody.

