



PP2A-B56- α rabbit pAb

Cat No.:ES6718

For research use only

Overview

Product Name	PP2A-B56- α rabbit pAb
Host species	Rabbit
Applications	WB;IHC
Species Cross-Reactivity	Human;Mouse;Rat
Recommended dilutions	WB 1:500-2000;IHC-p 1:50-300
Immunogen	The antiserum was produced against synthesized peptide derived from human PPP2R5A. AA range:321-370
Specificity	PP2A-B56- α Polyclonal Antibody detects endogenous levels of PP2A-B56- α protein.
Formulation	Liquid in PBS containing 50% glycerol, 0.5% BSA and 0.02% sodium azide.
Storage	Store at -20°C. Avoid repeated freeze-thaw cycles.
Protein Name	Serine/threonine-protein phosphatase 2A 56 kDa regulatory subunit alpha isoform
Gene Name	PPP2R5A
Cellular localization	Cytoplasm . Nucleus . Chromosome, centromere . From mitotic prophase to metaphase, localizes at the inner centromere between a pair of sister kinetochores. Decreased expression at the onset of anaphase. .
Purification	The antibody was affinity-purified from rabbit antiserum by affinity-chromatography using epitope-specific immunogen.
Clonality	Polyclonal
Concentration	1 mg/ml
Observed band	57kD
Human Gene ID	5525
Human Swiss-Prot Number	Q15172
Alternative Names	PPP2R5A; Serine/threonine-protein phosphatase 2A 56 kDa regulatory subunit alpha isoform; PP2A B subunit isoform B'-alpha; PP2A B subunit isoform B56-alpha; PP2A B subunit isoform PR61-alpha;

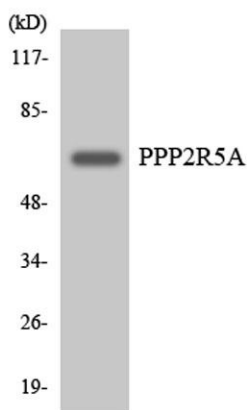




Background

PR61alpha; PP2A B subunit isoform R5-alpha

The product of this gene belongs to the phosphatase 2A regulatory subunit B family. Protein phosphatase 2A is one of the four major Ser/Thr phosphatases, and it is implicated in the negative control of cell growth and division. It consists of a common heteromeric core enzyme, which is composed of a catalytic subunit and a constant regulatory subunit, that associates with a variety of regulatory subunits. The B regulatory subunit might modulate substrate selectivity and catalytic activity. This gene encodes an alpha isoform of the regulatory subunit B56 subfamily. Alternative transcript variants encoding distinct isoforms have been found for this gene. [provided by RefSeq, Dec 2010],



Western blot analysis of the lysates from HeLa cells using PPP2R5A antibody.



Immunohistochemical analysis of paraffin-embedded human oophoroma. 1, Antibody was diluted at 1:200(4° overnight). 2, Tris-EDTA,pH9.0 was used for antigen retrieval. 3,Secondary antibody was diluted at 1:200(room temperature, 45min).

