



# RFWD3 rabbit pAb

Cat No.:ES6711

For research use only

## Overview

<b>Product Name</b>	RFWD3 rabbit pAb
<b>Host species</b>	Rabbit
<b>Applications</b>	WB;IHC;IF;ELISA
<b>Species Cross-Reactivity</b>	Human;Rat;Mouse;
<b>Recommended dilutions</b>	Western Blot: 1/500 - 1/2000. Immunohistochemistry: 1/100 - 1/300. ELISA: 1/40000. Not yet tested in other applications.
<b>Immunogen</b>	The antiserum was produced against synthesized peptide derived from human RFWD3. AA range:374-423
<b>Specificity</b>	RFWD3 Polyclonal Antibody detects endogenous levels of RFWD3 protein.
<b>Formulation</b>	Liquid in PBS containing 50% glycerol, 0.5% BSA and 0.02% sodium azide.
<b>Storage</b>	Store at -20°C. Avoid repeated freeze-thaw cycles.
<b>Protein Name</b>	E3 ubiquitin-protein ligase RFWD3
<b>Gene Name</b>	RFWD3
<b>Cellular localization</b>	Nucleus . Nucleus, PML body . Cytoplasm . In undamaged cells, found both in the cytoplasm and in the nucleus, partially associated with PML nuclear bodies (PubMed:21558276). In response to replication block, such as that caused by hydroxyurea treatment, or to DNA damage caused by ionizing radiations or doxorubicin, recruited to the nucleus, to stalled replication forks or to sites of DNA repair (PubMed:21504906, PubMed:28575657). This recruitment depends upon RPA2 (PubMed:21504906). .
<b>Purification</b>	The antibody was affinity-purified from rabbit antiserum by affinity-chromatography using epitope-specific immunogen.
<b>Clonality</b>	Polyclonal
<b>Concentration</b>	1 mg/ml

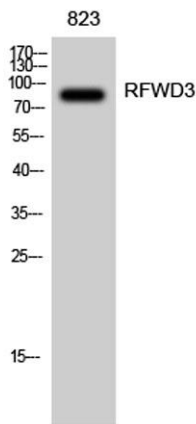




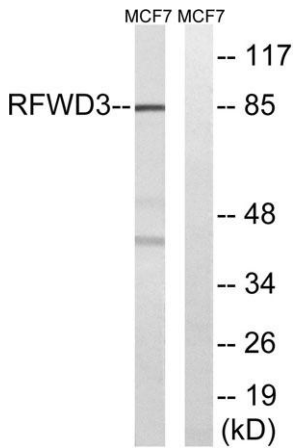
**Observed band** 85kD  
**Human Gene ID** 55159  
**Human Swiss-Prot Number** Q6PCD5  
**Alternative Names** RFWD3; RNF201; E3 ubiquitin-protein ligase RFWD3; RING finger and WD repeat domain-containing protein 3; RING finger protein 201

**Background**

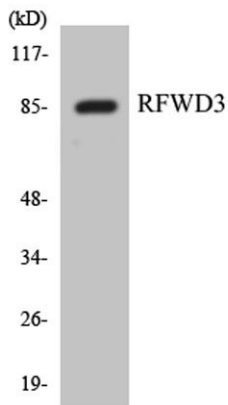
PTM:Phosphorylated upon DNA damage, probably by ATM or ATR.,similarity:Contains 1 RING-type zinc finger.,similarity:Contains 3 WD repeats.,



Western Blot analysis of 823 cells using RFWD3 Polyclonal Antibody diluted at 1:2000



Western blot analysis of lysates from MCF-7 cells, using RFWD3 Antibody. The lane on the right is blocked with the synthesized peptide.

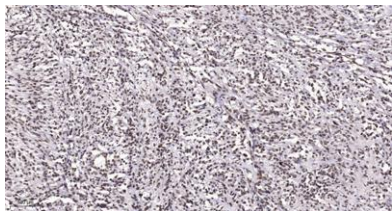


Western blot analysis of the lysates from HepG2 cells using RFWD3 antibody.





**ELK Biotechnology**



Immunohistochemical analysis of paraffin-embedded human Small intestinal stromal tumor. 1, Tris-EDTA,pH9.0 was used for antigen retrieval. 2 Antibody was diluted at 1:200(4° overnight).3,Secondary antibody was diluted at 1:200(room temperature, 45min).



+86-27-59760950

[ELKbio@ELKbiotech.com](mailto:ELKbio@ELKbiotech.com)

[www.elkbiotech.com](http://www.elkbiotech.com)

23-2, No.388 Gaoxin 2nd Road,Wuhan East Lake Hi-tech Development Zone, Hubei , P.R.C