



# PTG rabbit pAb

Cat No.:ES6703

For research use only

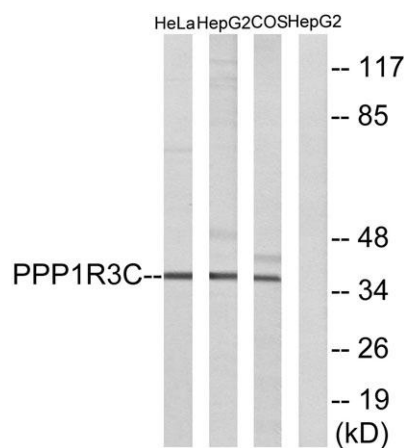
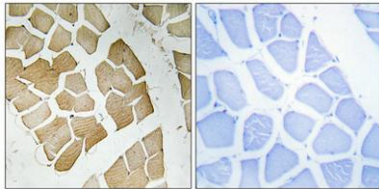
## Overview

|                          |  |
|--------------------------|--|
| Product Name             | PTG rabbit pAb   |
| Host species             | Rabbit   |
| Applications             | WB;IHC;IF;ELISA  |
| Species Cross-Reactivity | Human;Monkey   |
| Recommended dilutions    | Western Blot: 1/500 - 1/2000.<br>Immunohistochemistry: 1/100 - 1/300. ELISA:<br>1/20000. Not yet tested in other applications.                               |
| Immunogen                | The antiserum was produced against synthesized peptide derived from human PPP1R3C. AA range:44-93  |
| Specificity              | PTG Polyclonal Antibody detects endogenous levels of PTG protein.  |
| Formulation              | Liquid in PBS containing 50% glycerol, 0.5% BSA and 0.02% sodium azide.  |
| Storage                  | Store at -20°C. Avoid repeated freeze-thaw cycles.   |
| Protein Name             | Protein phosphatase 1 regulatory subunit 3C  |
| Gene Name                | PPP1R3C  |
| Cellular localization    | cytosol,   |
| Purification             | The antibody was affinity-purified from rabbit antiserum by affinity-chromatography using epitope-specific immunogen.  |
| Clonality                | Polyclonal   |
| Concentration            | 1 mg/ml  |
| Observed band            | 36kD   |
| Human Gene ID            | 5507   |
| Human Swiss-Prot Number  | Q9UQK1   |
| Alternative Names        | PPP1R3C; PPP1R5; Protein phosphatase 1 regulatory subunit 3C; Protein phosphatase 1 regulatory subunit 5; PP1 subunit R5; Protein targeting to glycogen; PTG |
| Background               | This gene encodes a carbohydrate binding protein that is a subunit of the protein phosphatase 1 (PP1) complex. PP1 catalyzes reversible protein              |



phosphorylation, which is important in a wide range of cellular activities. The encoded protein affects glycogen biosynthesis by activating glycogen synthase and limiting glycogen breakdown by reducing glycogen phosphorylase activity. DNA hypermethylation of this gene has been found in colorectal cancer patients. The encoded protein also interacts with the laforin protein, which is a protein tyrosine phosphatase implicated in Lafora disease. [provided by RefSeq, Sep 2016],

Immunohistochemical analysis of paraffin-embedded Human skeletal muscle. Antibody was diluted at 1:100(4° overnight). High-pressure and temperature Tris-EDTA,pH8.0 was used for antigen retrieval. Negative contrl (right) obtained from antibody was pre-abs



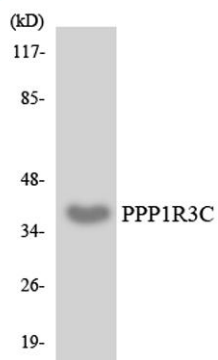
Western blot analysis of lysates from HepG2, HeLa, and COS7 cells, using PPP1R3C Antibody. The lane on the right is blocked with the synthesized peptide.





**ELK Biotechnology**

Western blot analysis of the lysates from HeLa cells using  
PPP1R3C antibody.



+86-27-59760950

ELKbio@ELKbiotech.com

[www.elkbiotech.com](http://www.elkbiotech.com)

23-2, No.388 Gaoxin 2nd Road,Wuhan East Lake Hi-tech Development Zone, Hubei , P.R.C