

PPP1R3A rabbit pAb

Cat No.:ES6701

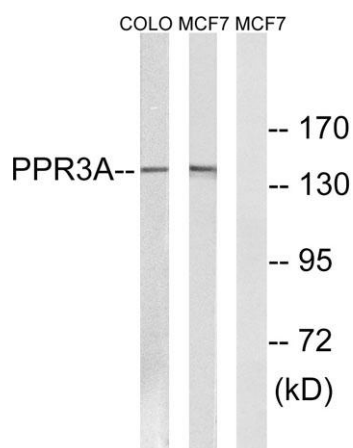
For research use only

Overview

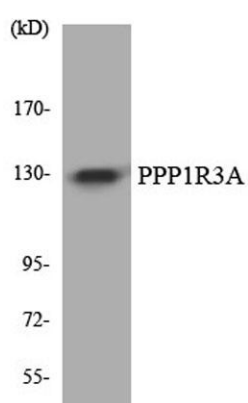
Product Name	PPP1R3A rabbit pAb
Host species	Rabbit
Applications	WB;IHC
Species Cross-Reactivity	Human;Rat;Mouse;
Recommended dilutions	WB 1:500-2000;IHC-p 1:50-300
Immunogen	The antiserum was produced against synthesized peptide derived from human PPP1R3A. AA range:647-696
Specificity	PPP1R3A Polyclonal Antibody detects endogenous levels of PPP1R3A protein.
Formulation	Liquid in PBS containing 50% glycerol, 0.5% BSA and 0.02% sodium azide.
Storage	Store at -20°C. Avoid repeated freeze-thaw cycles.
Protein Name	Protein phosphatase 1 regulatory subunit 3A
Gene Name	PPP1R3A
Cellular localization	Membrane ; Single-pass membrane protein .
Purification	The antibody was affinity-purified from rabbit antiserum by affinity-chromatography using epitope-specific immunogen.
Clonality	Polyclonal
Concentration	1 mg/ml
Observed band	140kD
Human Gene ID	5506
Human Swiss-Prot Number	Q16821
Alternative Names	PPP1R3A; PP1G; Protein phosphatase 1 regulatory subunit 3A; Protein phosphatase 1 glycogen-associated regulatory subunit; Protein phosphatase type-1 glycogen targeting subunit; RG1
Background	The glycogen-associated form of protein phosphatase-1 (PP1) derived from skeletal muscle is a heterodimer composed of a 37-kD catalytic subunit and a 124-kD targeting and regulatory subunit. This gene encodes the regulatory subunit



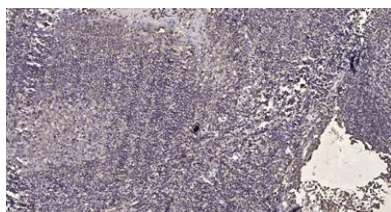
which binds to muscle glycogen with high affinity, thereby enhancing dephosphorylation of glycogen-bound substrates for PP1 such as glycogen synthase and glycogen phosphorylase kinase. [provided by RefSeq, Jul 2008],



Western blot analysis of lysates from MCF-7 and COLO cells, using PPP1R3A Antibody. The lane on the right is blocked with the synthesized peptide.



Western blot analysis of the lysates from HT-29 cells using PPP1R3A antibody.



Immunohistochemical analysis of paraffin-embedded human tonsil. 1, Antibody was diluted at 1:200(4° overnight). 2, Tris-EDTA,pH9.0 was used for antigen retrieval. 3,Secondary antibody was diluted at 1:200(room temperature, 45min).

