



hCAP-G2 rabbit pAb

Cat No.:ES6679

For research use only

Overview

Product Name	hCAP-G2 rabbit pAb
Host species	Rabbit
Applications	WB;IHC;IF;ELISA
Species Cross-Reactivity	Human;Rat;Mouse;
Recommended dilutions	Immunohistochemistry: 1/100 - 1/300. ELISA: 1/40000. Not yet tested in other applications.
Immunogen	The antiserum was produced against synthesized peptide derived from human NCAPG2. AA range:561-610
Specificity	hCAP-G2 Polyclonal Antibody detects endogenous levels of hCAP-G2 protein.
Formulation	Liquid in PBS containing 50% glycerol, 0.5% BSA and 0.02% sodium azide.
Storage	Store at -20°C. Avoid repeated freeze-thaw cycles.
Protein Name	Condensin-2 complex subunit G2
Gene Name	NCAPG2
Cellular localization	Nucleus .
Purification	The antibody was affinity-purified from rabbit antiserum by affinity-chromatography using epitope-specific immunogen.
Clonality	Polyclonal
Concentration	1 mg/ml
Observed band	
Human Gene ID	54892
Human Swiss-Prot Number	Q86X12
Alternative Names	NCAPG2; LUZP5; Condensin-2 complex subunit G2; Chromosome-associated protein G2; CAP-G2; hCAP-G2; Leucine zipper protein 5; Non-SMC condensin II complex subunit G2
Background	non-SMC condensin II complex subunit G2(NCAPG2) Homo sapiens This gene encodes a protein that belongs to the Condensin2nSMC family of proteins. The encoded protein is a regulatory subunit of the

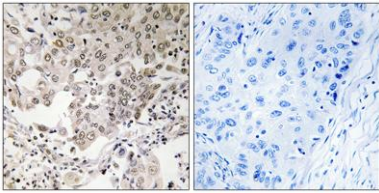




ELK Biotechnology

condensin II complex which, along with the condensin I complex, plays a role in chromosome assembly and segregation during mitosis. A similar protein in mouse is required for early development of the embryo. Alternate splicing results in multiple transcript variants. [provided by RefSeq, Aug 2013],

Immunohistochemistry analysis of paraffin-embedded human lung carcinoma, using NCAPG2 Antibody. The picture on the right is blocked with the synthesized peptide.



+86-27-59760950

ELKbio@ELKbiotech.com

www.elkbiotech.com

23-2, No.388 Gaoxin 2nd Road,Wuhan East Lake Hi-tech Development Zone, Hubei , P.R.C