



Histone H2B (Acetyl Lys15) rabbit pAb

Cat No.:ES6640

For research use only

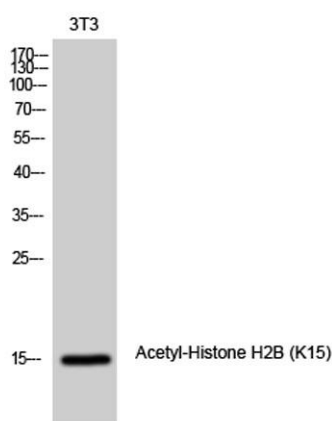
Overview

Product Name	Histone H2B (Acetyl Lys15) rabbit pAb
Host species	Rabbit
Applications	WB;IHC;IF;ELISA
Species Cross-Reactivity	Human;Mouse
Recommended dilutions	Western Blot: 1/500 - 1/2000. Immunohistochemistry: 1/100 - 1/300. Immunofluorescence: 1/200 - 1/1000. ELISA: 1/5000. Not yet tested in other applications.
Immunogen	The antiserum was produced against synthesized peptide derived from human Histone H2B around the acetylated site of Lys15. AA range:1-50
Specificity	Acetyl-Histone H2B (K15) Polyclonal Antibody detects endogenous levels of Histone H2B protein only when acetylated at K15.
Formulation	Liquid in PBS containing 50% glycerol, 0.5% BSA and 0.02% sodium azide.
Storage	Store at -20°C. Avoid repeated freeze-thaw cycles.
Protein Name	Histone H2B type F-S
Gene Name	H2BFS
Cellular localization	Nucleus. Chromosome.
Purification	The antibody was affinity-purified from rabbit antiserum by affinity-chromatography using epitope-specific immunogen.
Clonality	Polyclonal
Concentration	1 mg/ml
Observed band	20kD
Human Gene ID	54145
Human Swiss-Prot Number	P57053
Alternative Names	H2BFS; Histone H2B type F-S; Histone H2B.s; H2B/s;H2BK15AC
Background	H2BFS (H2B Histone Family Member S (Pseudogene)) is a Pseudogene. Diseases associated with H2BFS include endometrial stromal sarcoma.



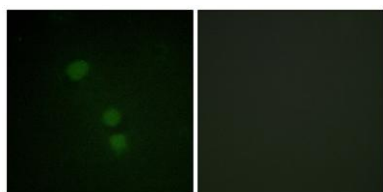


Among its related pathways are Packaging Of Telomere Ends. GO annotations related to this gene include sequence-specific DNA binding and protein heterodimerization activity. An important paralog of this gene is HIST1H2BH.

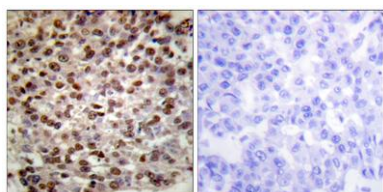


Western Blot analysis of 3T3 cells using Acetyl-Histone H2B (K15) Polyclonal Antibody diluted at 1:1000. Secondary antibody(catalog#:RS0002) was diluted at 1:20000

Immunofluorescence analysis of HeLa cells, using Histone H2B (Acetyl-Lys15) Antibody. The picture on the right is blocked with the synthesized peptide.

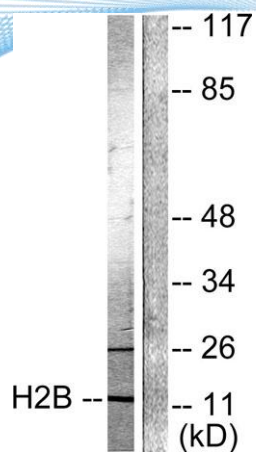


Immunohistochemistry analysis of paraffin-embedded human breast carcinoma tissue, using Histone H2B (Acetyl-Lys15) Antibody. The picture on the right is blocked with the synthesized peptide.





ELK Biotechnology



Western blot analysis of lysates from Raw264.7 cells, treated with TSA 400nM 24h, using Histone H2B (Acetyl-Lys15) Antibody. The lane on the right is blocked with the synthesized peptide.



+86-27-59760950

ELKbio@ELKbiotech.com

www.elkbiotech.com

23-2, No.388 Gaoxin 2nd Road,Wuhan East Lake Hi-tech Development Zone, Hubei , P.R.C