



# PLC $\gamma$ 1 (phospho Tyr1253) rabbit pAb

Cat No.:ES6605

For research use only

## Overview

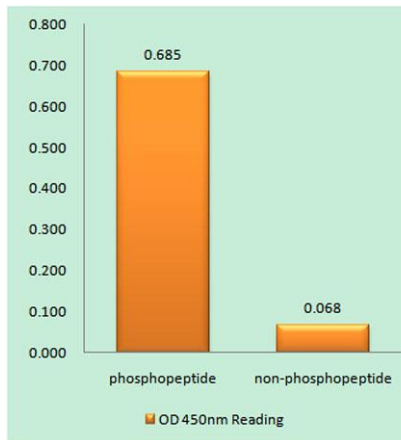
<b>Product Name</b>	PLC $\gamma$ 1 (phospho Tyr1253) rabbit pAb
<b>Host species</b>	Rabbit
<b>Applications</b>	WB;IHC
<b>Species Cross-Reactivity</b>	Human;Mouse;Rat
<b>Recommended dilutions</b>	WB 1:500-2000;IHC-p 1:50-300
<b>Immunogen</b>	The antiserum was produced against synthesized peptide derived from human PLCG1 around the phosphorylation site of Tyr1253. AA range:1221-1270
<b>Specificity</b>	Phospho-PLC $\gamma$ 1 (Y1253) Polyclonal Antibody detects endogenous levels of PLC $\gamma$ 1 protein only when phosphorylated at Y1253.
<b>Formulation</b>	Liquid in PBS containing 50% glycerol, 0.5% BSA and 0.02% sodium azide.
<b>Storage</b>	Store at -20°C. Avoid repeated freeze-thaw cycles.
<b>Protein Name</b>	1-phosphatidylinositol 4,5-bisphosphate phosphodiesterase gamma-1
<b>Gene Name</b>	PLCG1
<b>Cellular localization</b>	Cell projection, lamellipodium . Cell projection, ruffle . Rapidly redistributed to ruffles and lamellipodia structures in response to epidermal growth factor (EGF) treatment. .
<b>Purification</b>	The antibody was affinity-purified from rabbit antiserum by affinity-chromatography using epitope-specific immunogen.
<b>Clonality</b>	Polyclonal
<b>Concentration</b>	1 mg/ml
<b>Observed band</b>	150kD
<b>Human Gene ID</b>	5335
<b>Human Swiss-Prot Number</b>	P19174
<b>Alternative Names</b>	PLCG1; PLC1; 1-phosphatidylinositol 4; 5-bisphosphate phosphodiesterase gamma-1; PLC-148; Phosphoinositide phospholipase



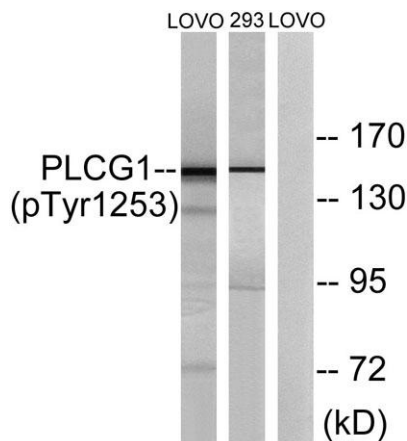


## Background

C-gamma-1; Phospholipase C-II; PLC-II;  
Phospholipase C-gamma-1; PLC-gamma-1  
The protein encoded by this gene catalyzes the formation of inositol 1,4,5-trisphosphate and diacylglycerol from phosphatidylinositol 4,5-bisphosphate. This reaction uses calcium as a cofactor and plays an important role in the intracellular transduction of receptor-mediated tyrosine kinase activators. For example, when activated by SRC, the encoded protein causes the Ras guanine nucleotide exchange factor RasGRP1 to translocate to the Golgi, where it activates Ras. Also, this protein has been shown to be a major substrate for heparin-binding growth factor 1 (acidic fibroblast growth factor)-activated tyrosine kinase. Two transcript variants encoding different isoforms have been found for this gene. [provided by RefSeq, Jul 2008],



Enzyme-Linked Immunosorbent Assay (Phospho-ELISA) for Immunogen Phosphopeptide (Phospho-left) and Non-Phosphopeptide (Phospho-right), using PLCG1 (Phospho-Tyr1253) Antibody

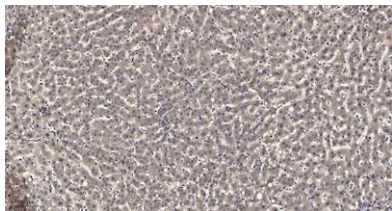


Western blot analysis of lysates from LOVO cells treated with and without 293 cells treated with heat shock, using PLCG1 (Phospho-Tyr1253) Antibody. The lane on the right is blocked with the phospho peptide.





**ELK Biotechnology**



Immunohistochemical analysis of paraffin-embedded human liver cancer. 1, Antibody was diluted at 1:200(4° overnight). 2, Tris-EDTA,pH9.0 was used for antigen retrieval. 3,Secondary antibody was diluted at 1:200(room temperature, 45min).



+86-27-59760950

[ELKbio@ELKbiotech.com](mailto:ELKbio@ELKbiotech.com)

[www.elkbiotech.com](http://www.elkbiotech.com)

23-2, No.388 Gaoxin 2nd Road,Wuhan East Lake Hi-tech Development Zone, Hubei , P.R.C