

IL-20 rabbit pAb

Cat No.:ES6465

For research use only

Overview

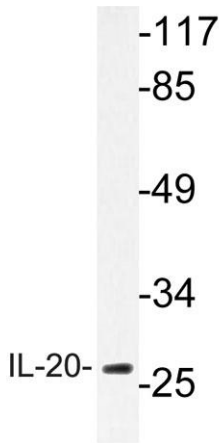
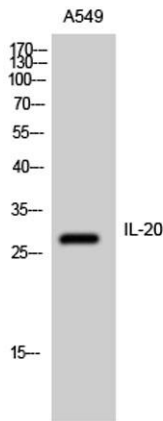
Product Name	IL-20 rabbit pAb
Host species	Rabbit
Applications	WB;ELISA
Species Cross-Reactivity	Human;Mouse
Recommended dilutions	Western Blot: 1/500 - 1/2000. ELISA: 1/5000. Not yet tested in other applications.
Immunogen	The antiserum was produced against synthesized peptide derived from human IL-20. AA range:12-61
Specificity	IL-20 Polyclonal Antibody detects endogenous levels of IL-20 protein.
Formulation	Liquid in PBS containing 50% glycerol, 0.5% BSA and 0.02% sodium azide.
Storage	Store at -20°C. Avoid repeated freeze-thaw cycles.
Protein Name	Interleukin-20
Gene Name	IL20
Cellular localization	Secreted.
Purification	The antibody was affinity-purified from rabbit antiserum by affinity-chromatography using epitope-specific immunogen.
Clonality	Polyclonal
Concentration	1 mg/ml
Observed band	28kD
Human Gene ID	50604
Human Swiss-Prot Number	Q9NYY1
Alternative Names	IL20; ZCYTO10; Interleukin-20; IL-20; Cytokine Zcyto10
Background	The protein encoded by this gene is a cytokine structurally related to interleukin 10 (IL10). This cytokine has been shown to transduce its signal through signal transducer and activator of transcription 3 (STAT3) in keratinocytes. A specific receptor for this cytokine is found to be expressed in skin and upregulated dramatically in psoriatic skin,





suggesting a role for this protein in epidermal function and psoriasis. [provided by RefSeq, Jul 2008],

Western Blot analysis of A549 cells using IL-20 Polyclonal Antibody



Western blot analysis of lysate from A549 cells, using IL-20 antibody.

