



PABP3 rabbit pAb

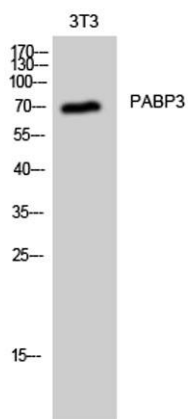
Cat No.:ES6454

For research use only

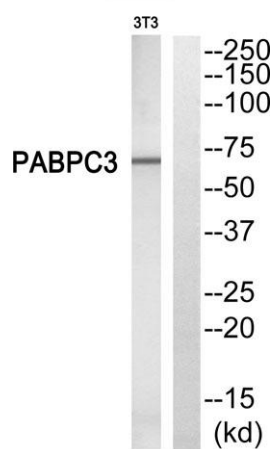
Overview

Product Name	PABP3 rabbit pAb
Host species	Rabbit
Applications	WB;IHC;IF;ELISA
Species Cross-Reactivity	Human;Rat;Mouse;
Recommended dilutions	Western Blot: 1/500 - 1/2000.IHC-p:1:50-300 ELISA: 1/20000. Not yet tested in other applications.
Immunogen	The antiserum was produced against synthesized peptide derived from human PABPC3. AA range:352-401
Specificity	PABP3 Polyclonal Antibody detects endogenous levels of PABP3 protein.
Formulation	Liquid in PBS containing 50% glycerol, 0.5% BSA and 0.02% sodium azide.
Storage	Store at -20°C. Avoid repeated freeze-thaw cycles.
Protein Name	Polyadenylate-binding protein 3
Gene Name	PABPC3
Cellular localization	Cytoplasm .
Purification	The antibody was affinity-purified from rabbit antiserum by affinity-chromatography using epitope-specific immunogen.
Clonality	Polyclonal
Concentration	1 mg/ml
Observed band	70kD
Human Gene ID	5042
Human Swiss-Prot Number	Q9H361
Alternative Names	PABPC3; PABP3; PABPL3; Polyadenylate-binding protein 3; PABP-3; Poly(A)-binding protein 3; Testis-specific poly(A)-binding protein
Background	Messenger RNA stability and translation initiation are extensively under the control of poly(A)-binding proteins (PABP). See PABPC1 (MIM 604679) for background information.[supplied by OMIM, Jul 2002],

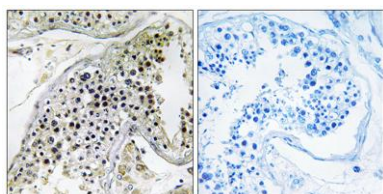




Western Blot analysis of 3T3 cells using PABP3 Polyclonal Antibody



Western blot analysis of PABPC3 Antibody. The lane on the right is blocked with the PABPC3 peptide.



Immunohistochemistry analysis of paraffin-embedded human testis, using PABPC3 Antibody. The lane on the right is blocked with the PABPC3 peptide.

